

LifeSize Control delivers
complete HD video
infrastructure management

Video Management Platform

LifeSize® Control™ is an all-in-one video management software platform that provides centralized management of your entire video conferencing network, including multivendor environments.

Simplifying the Administrative Experience

This innovative software solution helps video administrators efficiently manage, schedule and integrate complex video conferencing networks (endpoints and infrastructure) inside and outside your organization.

Intelligent automation tools address key video management functions in a simple, straightforward manner, providing 24/7 oversight and significant savings in time and resources. LifeSize Control Smart Scheduler software and Automatic Call Establishment™ frees administrators from manual scheduling, configuration and upgrades. A proactive alarm management system keeps administrators informed with on-the-go e-mail alerts and graphical reports. Plus a variety of reporting functions provide statistics and insights for accurate ROI tracking.

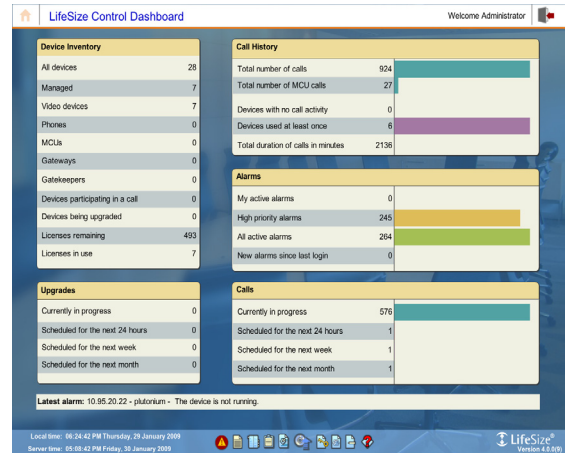
LifeSize Control seamlessly integrates with LifeSize® Transit™ to deliver automatic account provisioning, thus easing time intensive challenges associated with NAT and firewall traversal deployments for IT administrators.

Simplifying the End-User Experience

With Microsoft Exchange and Google Apps integration, LifeSize Control makes reserving video conference resources as simple as reserving a conference room. LifeSize Control e-mail integration requires no server-side patches and no client-side plug-ins, making LifeSize Control as easy to install as it is to use.

Absolute simplicity for end users. Confident IT administrators.

Do more. Travel less. Be present with LifeSize Control.



LifeSize Control Key Features

Manage in Real Time

Dashboard access to critical information and reporting

System Control

Track, manage, monitor, upgrade and schedule video and recordings

Multivendor Support

Manage systems from LifeSize, Cisco, Polycom, Sony and Radvision

Fast, Easy Scheduling

Schedule multipoint, point-to-point or recorded conferences via the web, Microsoft Exchange or Google Calendar

Graphical Reporting

Data and graphical reports delivered on demand or scheduled to your inbox

Global Directory Services

Automated registration and global directory access with H.350, LDAP or active directory

Secure

Standards-based access and end-to-end encryption

Smart Scheduler

Automatic resource allocation based on scheduling demands

Graphical, Web-based Interface

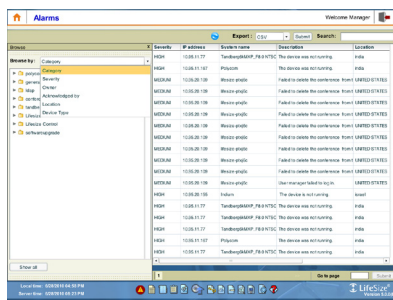
All-in-one, easy-to-use, web-based interface
Dashboard home screen provides live snapshots of the entire video infrastructure

Multivendor Video Management Platform

Discover, manage and monitor video communication systems and infrastructure from multiple vendors (LifeSize®, TANDBERG®, Polycom®, Sony®, Radvision®)
Manages infrastructure devices including gateways, gatekeepers, MCUs, NAT/firewall traversal systems and recording devices
Manages LifeSize Desktop for configuration management and directory
Manages LifeSize Transit Server and Client, providing automatic account provisioning for both video systems and LifeSize Desktop
Manages multivendor H.323, H.320 and SIP standards-based systems
Upgrades and downgrades video infrastructure from multiple vendors
SNMP interoperability with third-party network and systems management software

Real-Time Alarms, Filter and Workflow

Alarm management system monitors key events, including but not limited to authentication failures, software upgrades, communication issues and network issues
Notify technicians via e-mail and mobile devices
Assign, forward and acknowledge event alarms for multiple administrators
Set system thresholds of acceptable jitter, packet loss and frame rate



Templates and System Backup

Configure system-wide settings for individual or grouped video systems on demand or scheduled
Build templates for specific endpoint models or a common template that can be applied to all LifeSize video systems
Compare differences between templates and deployed systems to ensure system integrity
Maintain backup and restore points for the entire organization
Instantly change any LifeSize system setting with the new device detail page

License Key Manager

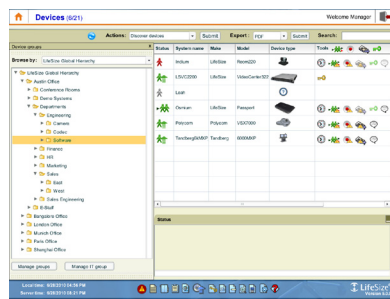
Store, retrieve and apply LifeSize video conferencing system keys

Smart Scheduler

Resolves capacity conflicts and allocates resources depending on conference conditions
MCU affinity associates endpoints with MCUs for either highest quality or best bandwidth cascading
Recording server associates endpoints with recording devices to deliver scheduled recording
Auto launch calls or reserve resources option
Auto disconnect calls option
External invite via IP, ISDN, e.164, or SIP addresses
Load balances ISDN gateways to ensure maximum call capacity
Drag-and-drop web browser-based scheduling interface for administrators
MCU prefix support for customized meetings

System Groupings and Directories Services

Assign video systems and infrastructure to logical groups for group-based management and multi-directory address book management
Unlimited number of groups
Unlimited number of address books
Standards-based H.350, H.350.1 and E.164 compliant user directory
Directory integration for LifeSize Desktop
Auto populate new users
Support for managed and nonmanaged devices
Support for multivendor address book formats
Support for LDAP and Active Directory environments



Live Conference Event Manager

Add participants, drop participants, terminate the call
Show call statistics for each system
View live snapshots of current conference
Adjust volume and mute
Enable/disable Do Not Disturb
Live packet loss and jitter graphing

Automatic Call Establishment™ (ACE)

Intelligent call setup and automatic rerouting. No forward call planning for point-to-point to large multipoint calls

Reporting

Prepackaged and customizable reports
Usage, inventory, diagnostic and reporting on call detail records (CDR)
Graphical and data reports by year, month, week and day
One-button export to PDF and CSV
Real-time reports generated from CDRs
Unlimited report subscriptions delivered to your inbox

System Audit

Track all control, administrator, video system and video infrastructure initiated events
Filter system event logs based on user, system type and date

Administrative Role Management

Create unlimited custom roles for access controls and permissions over administrators and groups of devices
Segment network video devices based on user-defined groups

Microsoft Exchange Integration

Schedule conferences, book resources and invite internal and third-party participants via Microsoft Outlook
Hassle-free installation—no Exchange server patches, no Outlook plug-ins
Transparent resource booking empowers end users to continue using Outlook just as they always have
E-mail-based administration for registered endpoints

Google Apps Integration

Ability to schedule conferences, book resources, and invite both internal and third-party participants via Gmail and Google Calendar
Hassle free installation—simple e-mail configuration
Transparent resource booking empowers end users to continue using standard e-mail clients
E-mail-based administration for registered endpoints

Security

Standards-based encryption—Rijndael, 16 bit
Secure access methods include SSL, SSH, SFTP, SNMP v5
Active Directory or LDAP authentication
Transition log files
Audit features
Secure storage
Roles-based access for administrators, engineers and operators

Server Requirements

Microsoft® Windows Server™ 2003 SP2 Standard edition 32 & 64-bit (x86/x64 only)
Microsoft® Windows Server™ 2008 R2 Standard edition 64-bit (x64 only)
Active Directory support for Microsoft Exchange integration
- Exchange 2003 support via FBA & NTLM
- Exchange 2007, 2010, support via EWS
2.4 Ghz processor, 1 GB RAM, at least 35 GB of free hard disk space¹
¹ Dual NIC cards are not supported on the LifeSize Control server

Client Requirements

Microsoft Internet Explorer™ version 8 or Mozilla Firefox™ 3.6
Adobe Flash™ plug-in V.9, V.10

Licensing:

Per seat packages and unlimited site license available



AMERICAS:
1601 S. MoPac Expressway
Suite 100
Austin, Texas 78746 USA
Phone +1 512 347 9300
Toll Free +1 877 543 3749
www.lifesize.com

EMEA:
LifeSize Communications
Toll-Free Europe
00 8000 999 09 799

APAC:
LifeSize Communications
Singapore
Phone: +65 6303 8370