

Profile 42"/52" contains:

- Monitor
- Bottom module:
 - Column
 - Foot module (stand-alone, wheelbase or wall mounting)
- Front grille (inside foot module box)
- Speaker grille (inside monitor box)
- Camera
- Microphones, 2 or 3 pcs.
- Touch Screen CS
- Remote control
- Cables, screws and tools
- Cleaning cloth



PRECAUTIONS

Please follow the steps in this installation guide when unpacking and assembling Profile 42"/52". A minimum of two (2) persons are required when installing Profile 42"/52".

UNPACKING THE SYSTEM AT THE DESTINATION

It is highly recommended to start the unpacking and assembling of Profile 42"/52" at the place where the system is to be used.

NOTE: If it is not possible to bring the complete delivery to the room where Profile 42"/52" is to be used, then unpack (step 1–2) and bring the smaller units to the destination.

- The monitor box requires two (2) persons to lift (42" 110 lb / 50 kg, 52" 132 lb / 60 kg)
- The column requires two (2) persons to lift (55 lb / 25 kg)
- The stand-alone foot module requires two (2) persons to lift (55 lb / 25 kg)

INSTALLATION NEAR A SOCKET-OUTLET

The equipment must be installed near a socket-outlet. The socket-outlet shall be easily accessible after installation.

ROOM GUIDELINES

NOTE: The floor must be in level.

The recommended distance between the Profile 42"/52" and the meeting room table should be minimum 59 in. / 150 cm.

Read more about room guidelines in the Video conferencing room primer.

USER DOCUMENTATION

The user documentation for this product, including compliance and safety information, is available on the Cisco web site. Go to: <http://www.cisco.com/go/telepresence/docs>.

DIMENSIONS OF PROFILE 42"

The assembled unit has the following dimensions:

- Height: 59.9 in. / 152 cm
- Width: 38.6 in. / 98 cm
- Depth: Stand-alone: 26.8 in. / 68 cm
Wall mounting: 8.9 in. / 23 cm (brackets included)
Wheelbase: 31.8 in. / 81 cm
- Weight: 231.5 lb / 105 kg

DIMENSIONS OF PROFILE 52"

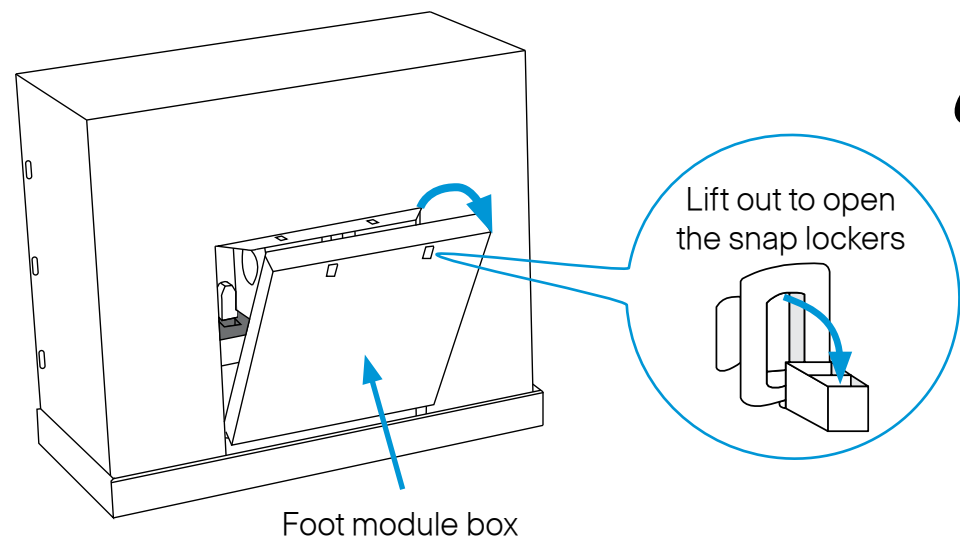
The assembled unit has the following dimensions:

- Height: 63.6 in. / 162 cm
- Width: 47.4 in. / 121 cm
- Depth: Same as for Profile 42"
- Weight: 253.5 lb / 115 kg

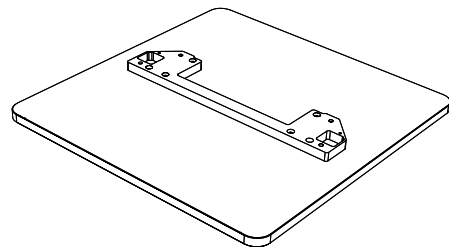
Unpacking and assembling Profile 42"/52"

1 Unpack the foot module (stand-alone, wall mounting or wheelbase)

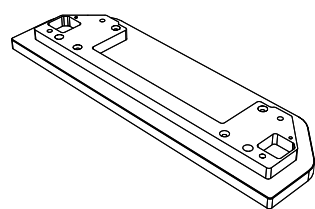
1. Open the snap lockers.
2. Lift out the foot module box.
3. Open the box and unpack the foot module.



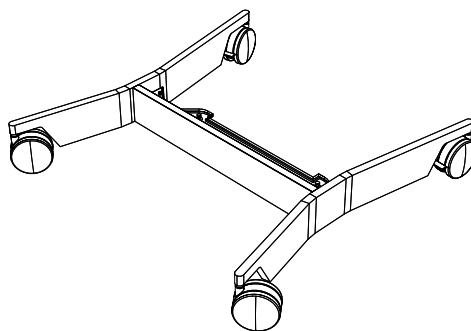
A Stand-alone foot module (55 lb / 25 kg)



B Wall mounting foot module



C Wheelbase foot module



The foot module box contains:

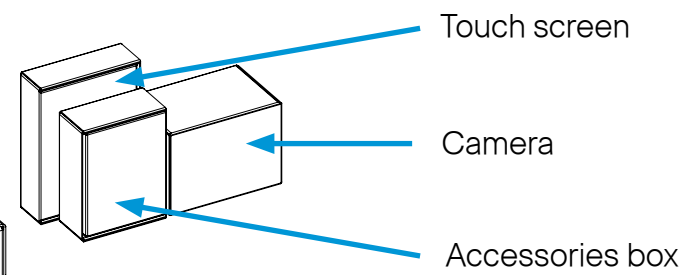
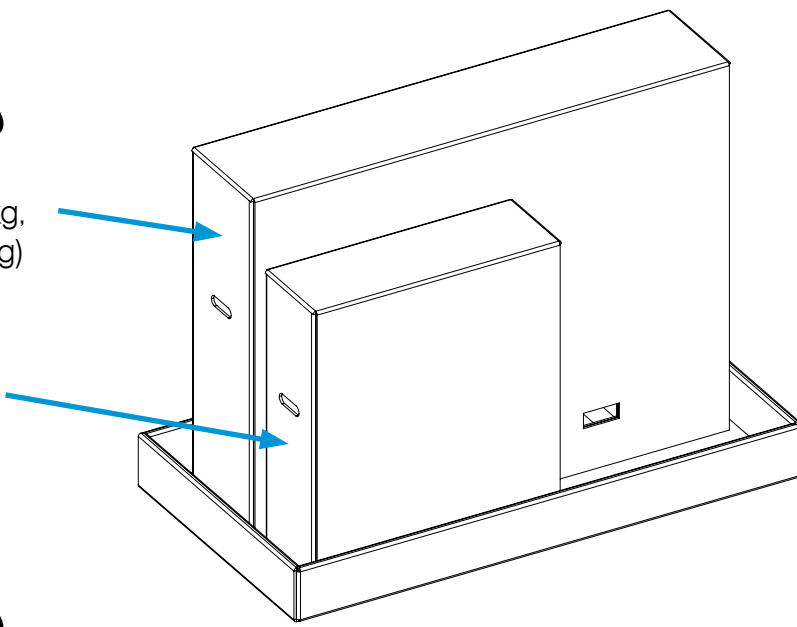
- Foot module (stand-alone, wall mounting or wheelbase)
- Front grille (not for wheelbase)
- Four M8×50 screws (not for wheelbase)
- Four M8×30 screws (wheelbase only)
- Wall brackets and four M6×10 screws (wall mounting only)
- Allen key
- Torx key (not for wheelbase)
- Level adjustment tool, orange (stand-alone only)

2 Remove the outer cover and locate the boxes for the monitor, column, camera, touch screen and accessories



Monitor
(42" 110 lb / 50 kg,
52" 132 lb / 60 kg)

Column
(55 lb / 25 kg)



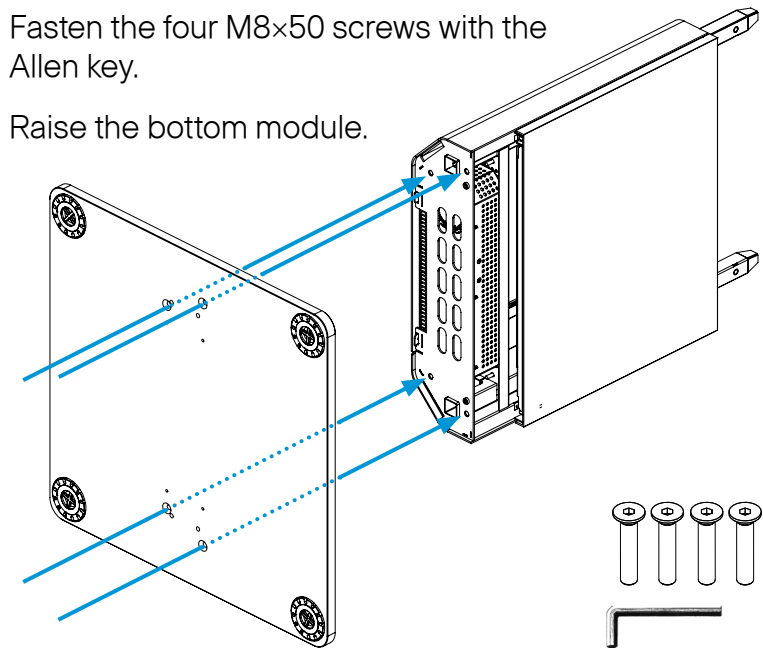
The accessories box contains:

- Microphones, 2 or 3 pcs.
- Remote control and 4 AAA batteries
- Cleaning cloth
- Power cables
- Two M8×60 screws

3 A + B: Mounting the stand-alone or the wall mounting foot modules to complete the bottom module

CAUTION: You need two persons to mount the column to the foot module. Take care to hold the modules firmly during installation.

1. Unpack the column. Hold it firmly while moving the foot module towards the bottom of the column, aligning the holes for the screws.
2. Fasten the four M8×50 screws with the Allen key.
3. Raise the bottom module.



Fastening the front grille

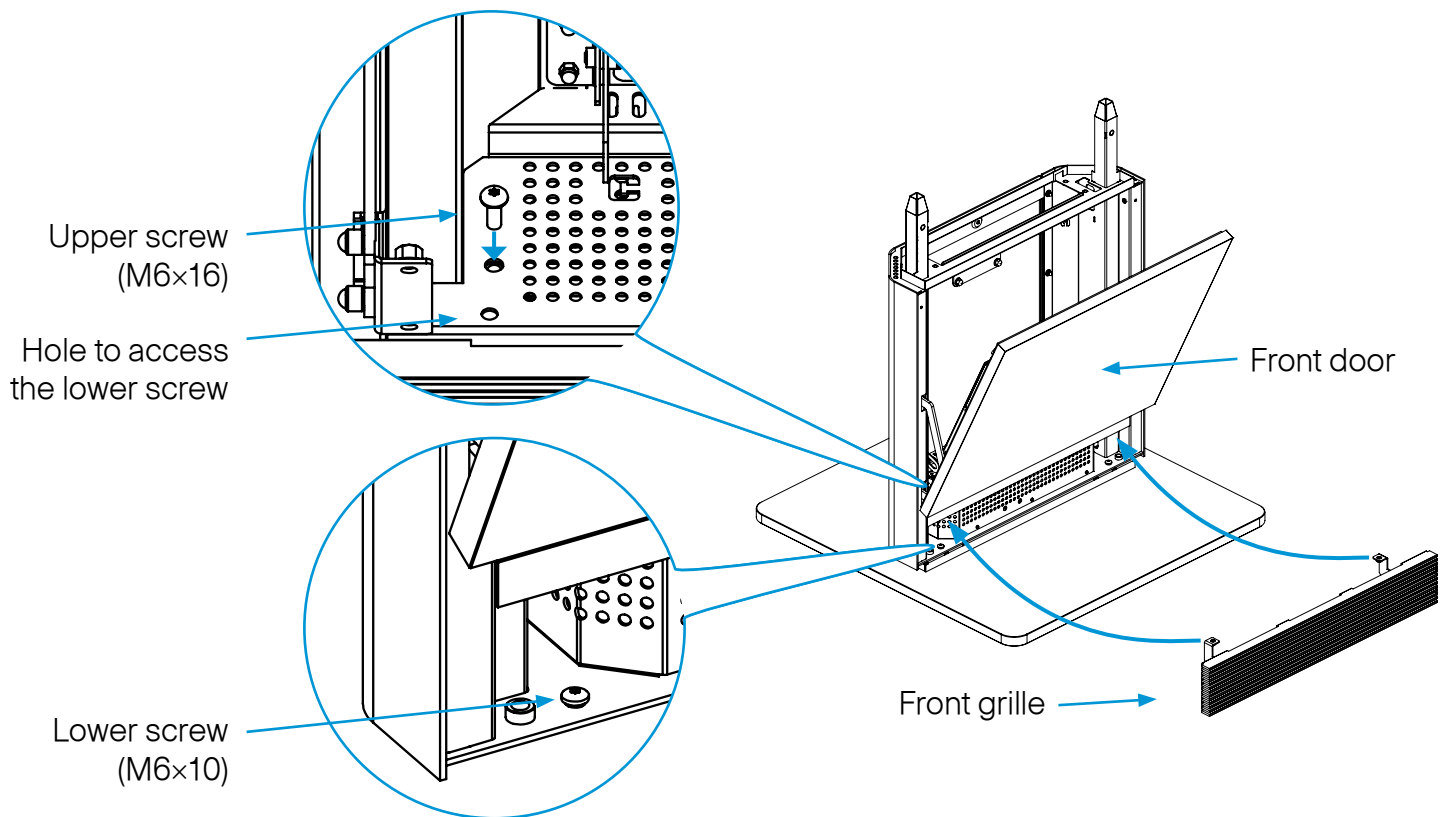
The front grille is attached using one M6×16 screw (upper screw) and one M6×10 screw (lower screw) on each side, as illustrated to the right. Use the Torx key.

The grille and Torx key are found in the foot module box. The screws are premounted in the grille and bottom module.

Follow these steps to fasten the grille:

4. Remove the two upper screws from the grille.
5. Loosen the two lower screws in the bottom module without removing them.
6. Place the front grille below the front door, as illustrated to the right. Tilt the front grille to get the brackets behind the front door and slide the grille on to the lower screws.
7. Open the front door to gain access to the screws.
 - a) Insert the upper screws without tightening them.
 - b) Close the front door to align the grille.
 - c) Open the front door again, and tighten the lower screws through the hole.
 - d) Tighten the upper screws.

Detailed illustration from inside, left hand side. Right hand side is similar.

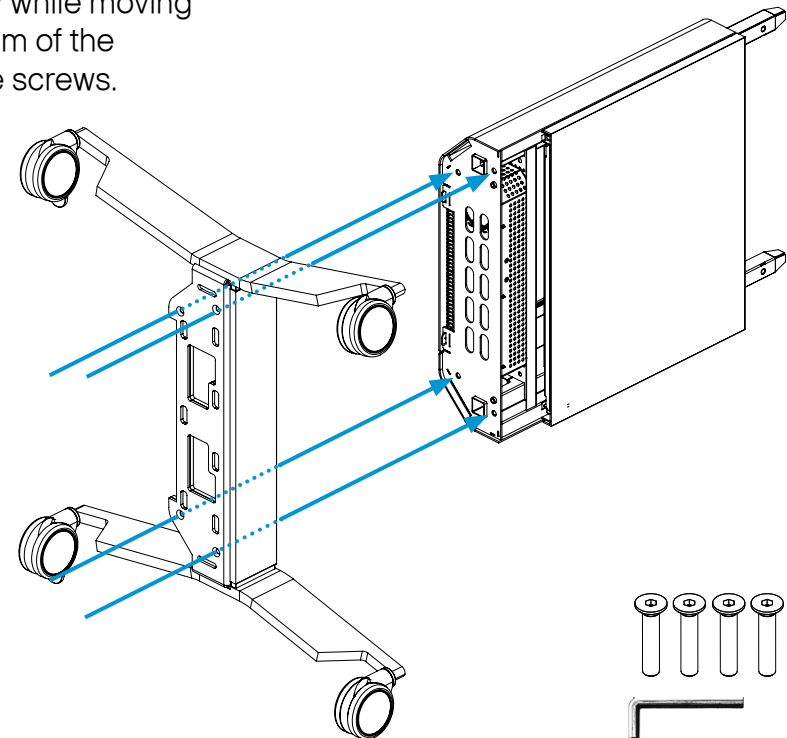


Detailed illustration, left hand side. Right hand side is similar.

3 C: Mounting the wheelbase foot module

CAUTION: You need two persons to mount the column to the wheelbase. Take care to hold the modules firmly during installation.

1. Unpack the column. Hold it firmly while moving the wheelbase towards the bottom of the column, aligning the holes for the screws.
2. Use the Allen key, which is found in the foot module box, to fasten the four M8×30 screws.
3. Raise the complete bottom module.



4 Wall mounting the unit

WARNING

Due to the size and weight of this equipment, it is very important that the wall mount unit is safely installed according to the installation instructions and that the wall is able to safely support the product.

It is highly recommended that the wall mounted system is installed by trained personnel.

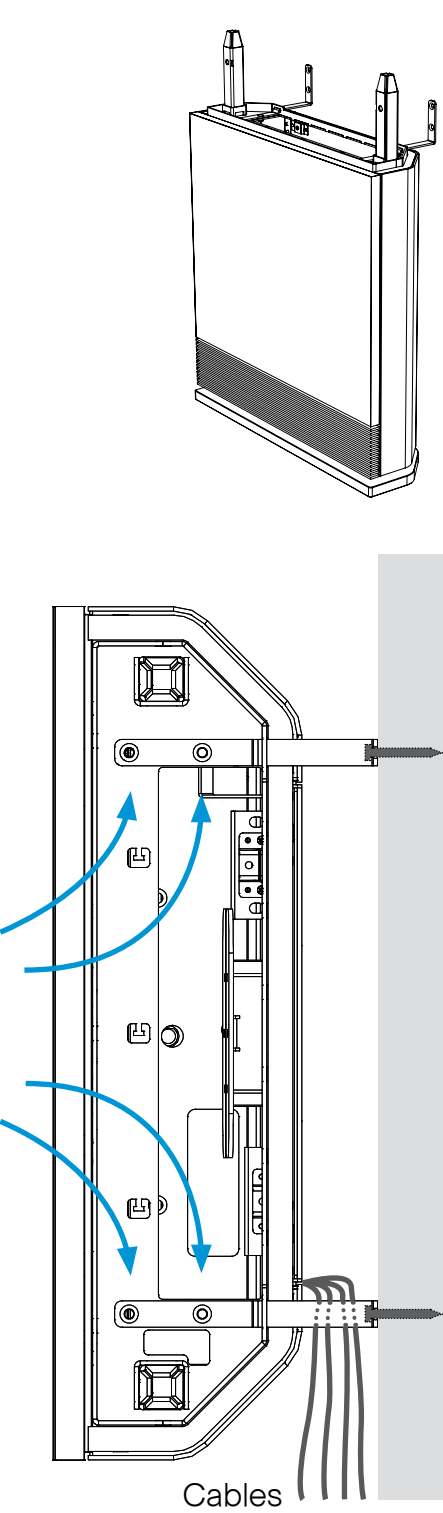
1. Use the Allen key, which is found in the foot module box, when fastening the wall brackets to the bottom module with four M6x10 screws.
2. Place the bottom module by the wall, mark where to fasten the brackets and move the bottom module away.

NOTE: Use a level to make sure the system is mounted in an upright position. Add a spacer between the wall bracket and the wall if necessary.

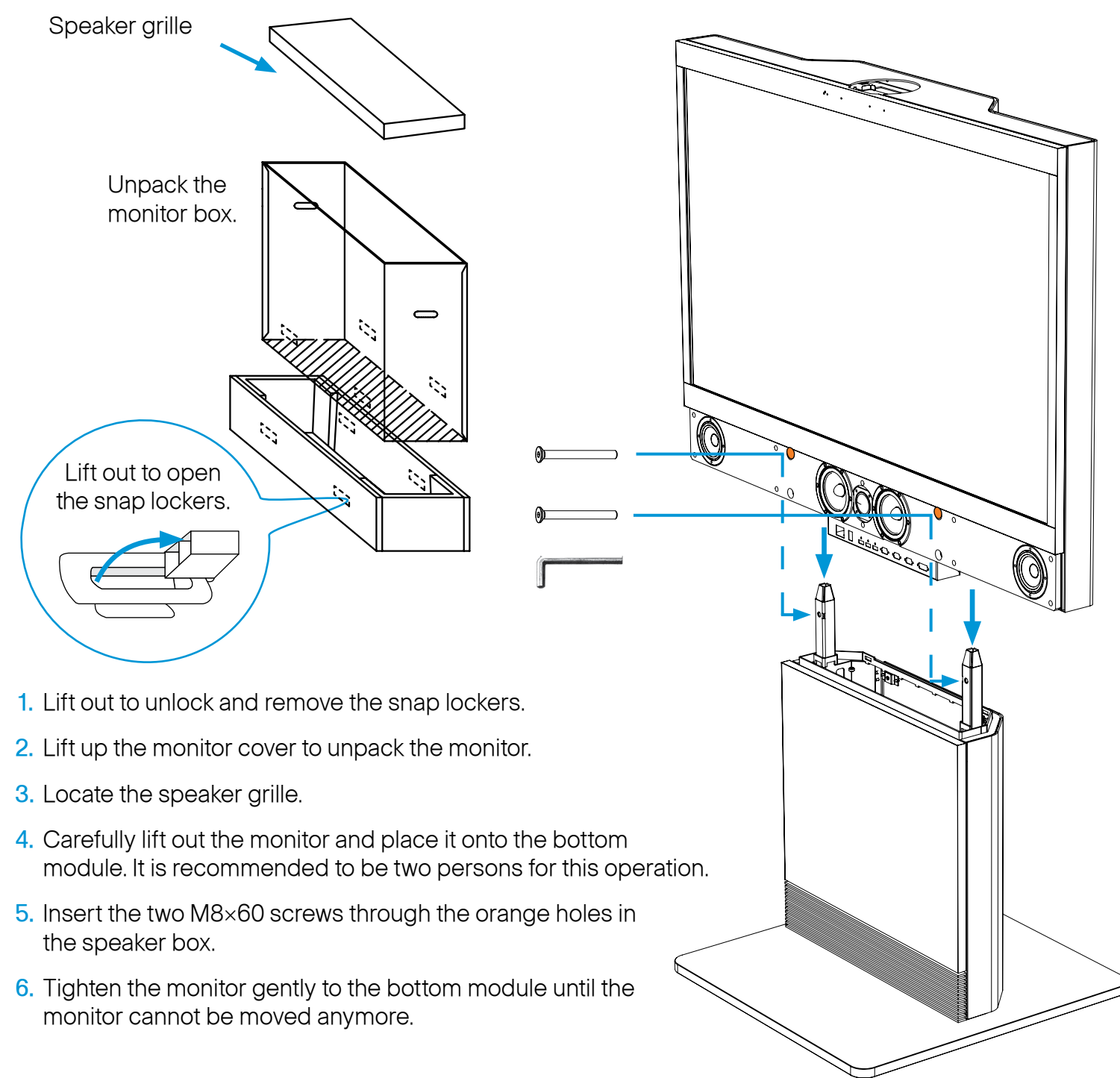
3. Add the suitable fixing device for the screws in the wall.

4. Open the rear door and locate and connect the cables which are lead out of the system at the rear side (the door is not accessible when placed by the wall).

5. Place the bottom module by the wall and fasten it to the wall with proper screws.



5 Unpack the Monitor box and mount the monitor to the bottom module

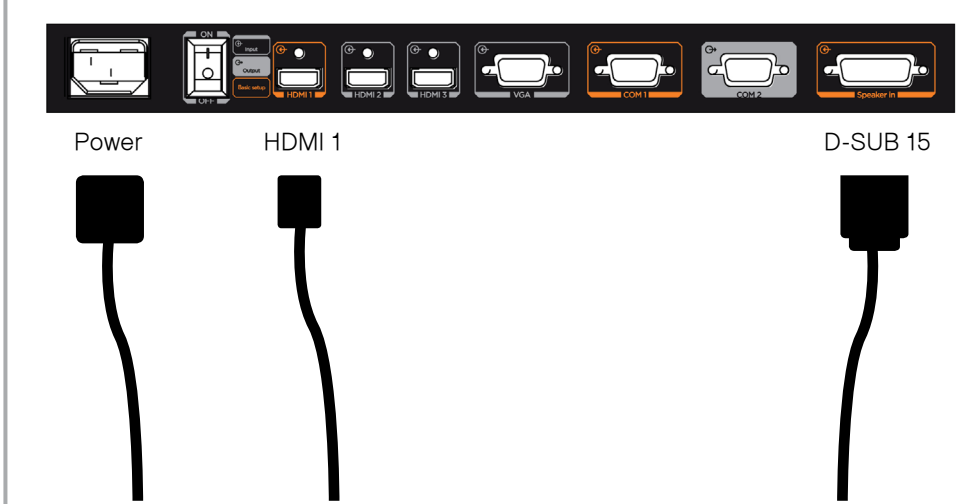


1. Lift out to unlock and remove the snap lockers.
2. Lift up the monitor cover to unpack the monitor.
3. Locate the speaker grille.
4. Carefully lift out the monitor and place it onto the bottom module. It is recommended to be two persons for this operation.
5. Insert the two M8x60 screws through the orange holes in the speaker box.
6. Tighten the monitor gently to the bottom module until the monitor cannot be moved anymore.

6 Connect the monitor cables

Locate the cables in the bottom module and connect them as described in the illustration:

1. HDMI cable
2. 15 pin D-SUB cable
3. Power cable



A Class declaration

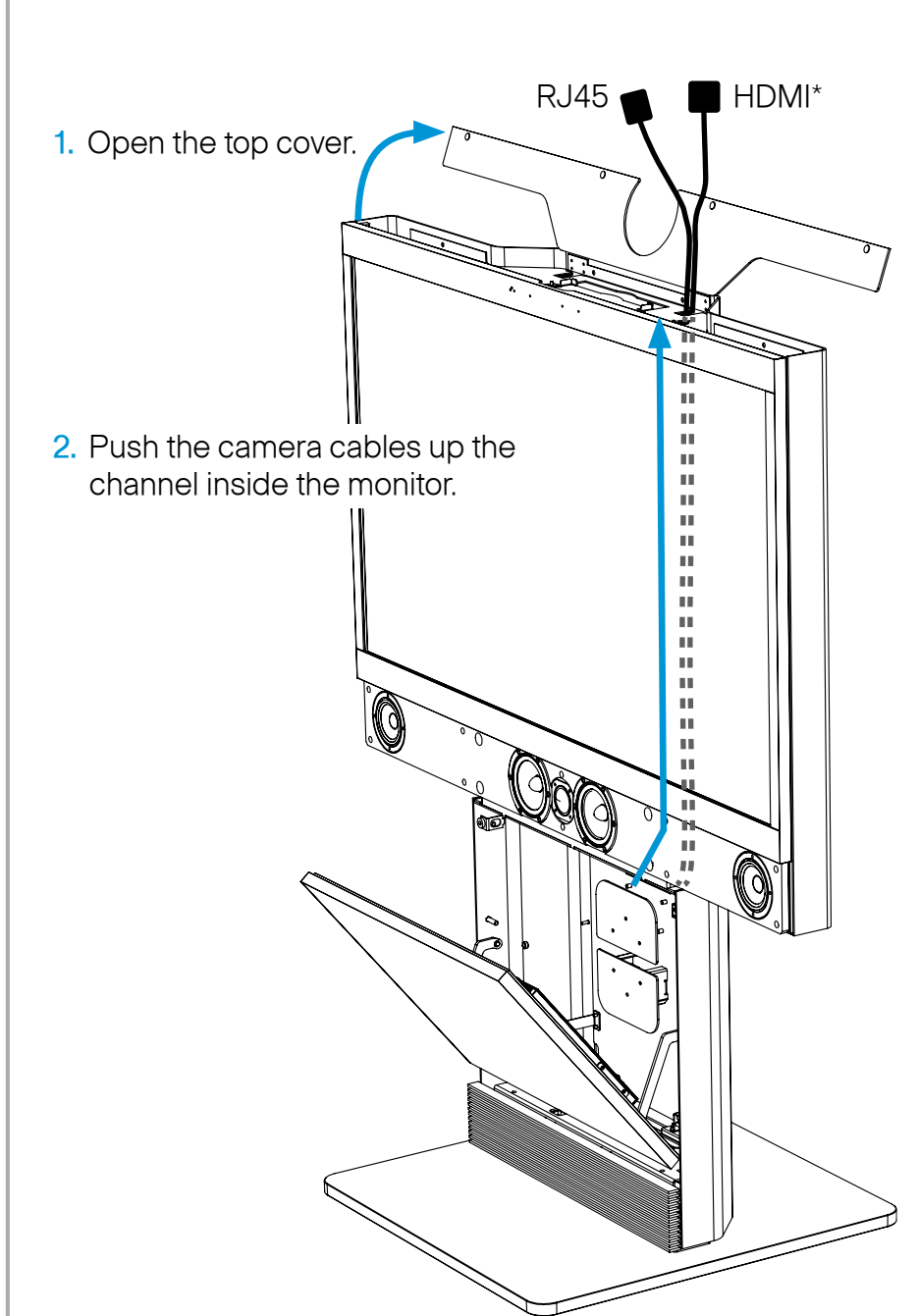
声明

此为 A 级产品，在生活环境中，该产品可能会造成无线电干扰。在这种情况下，可能需要用户对其干扰采取切实可行的措施。

WARNING

This is a class A product. In a domestic environment this product may cause radio interference in which case the user may be required to take adequate measures.

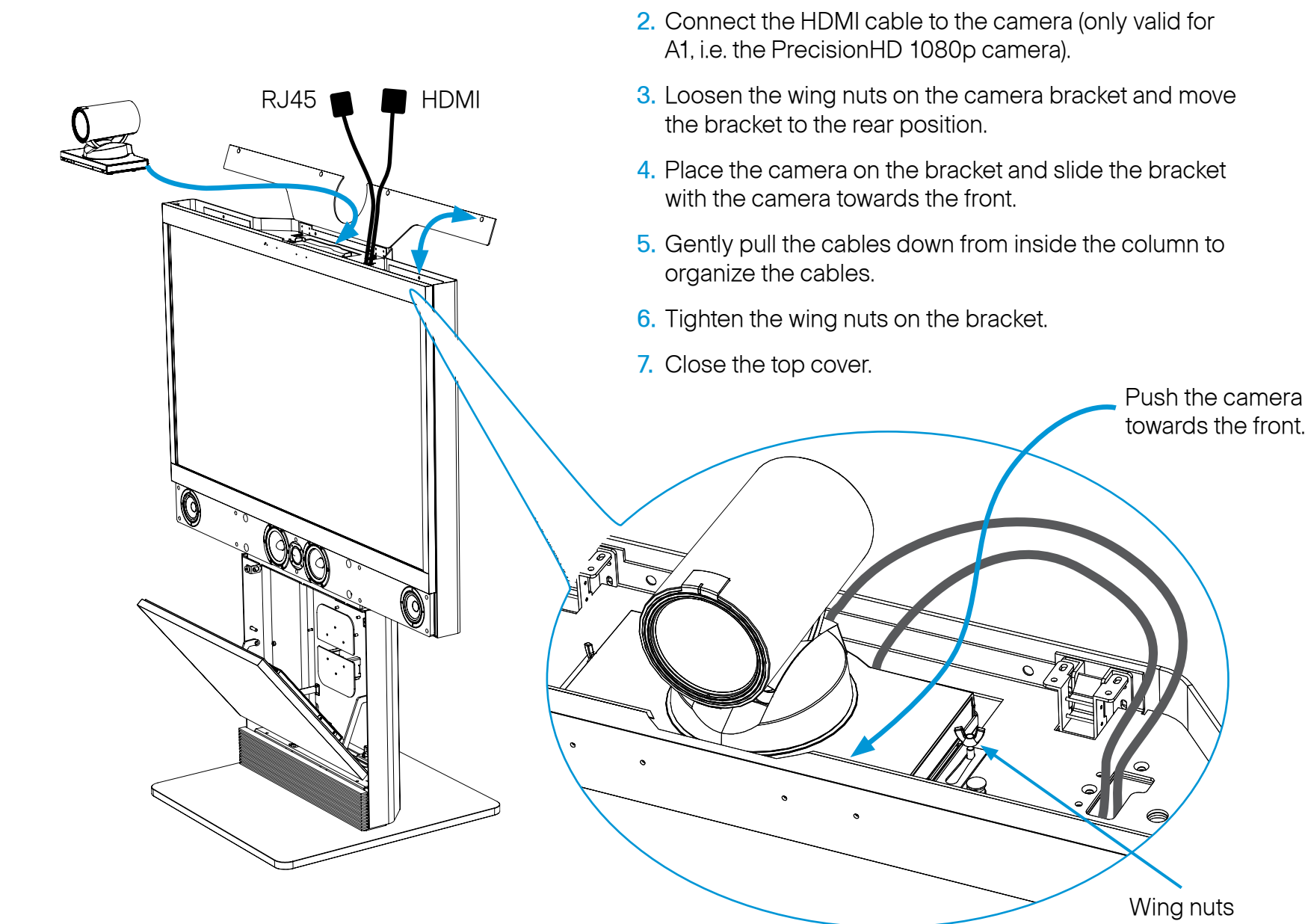
7 Camera cables



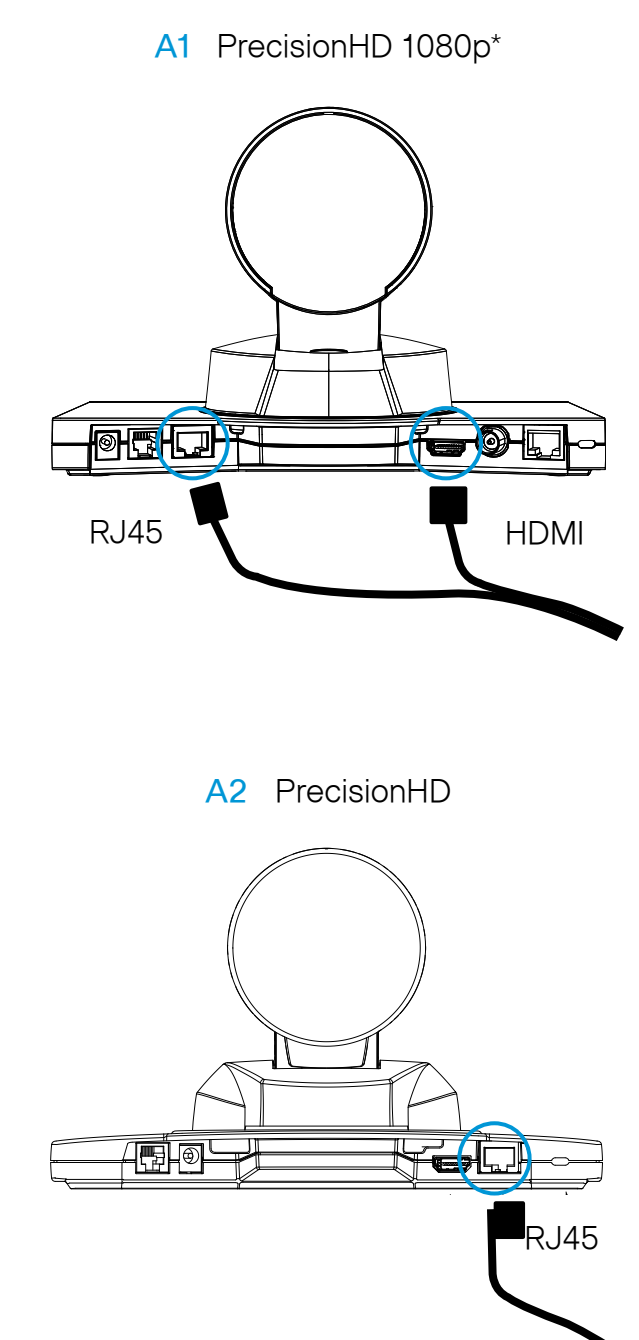
1. Open the top cover.
2. Push the camera cables up the channel inside the monitor.

* The HDMI cable is only valid for the PrecisionHD 1080p camera.

8 Mounting the camera

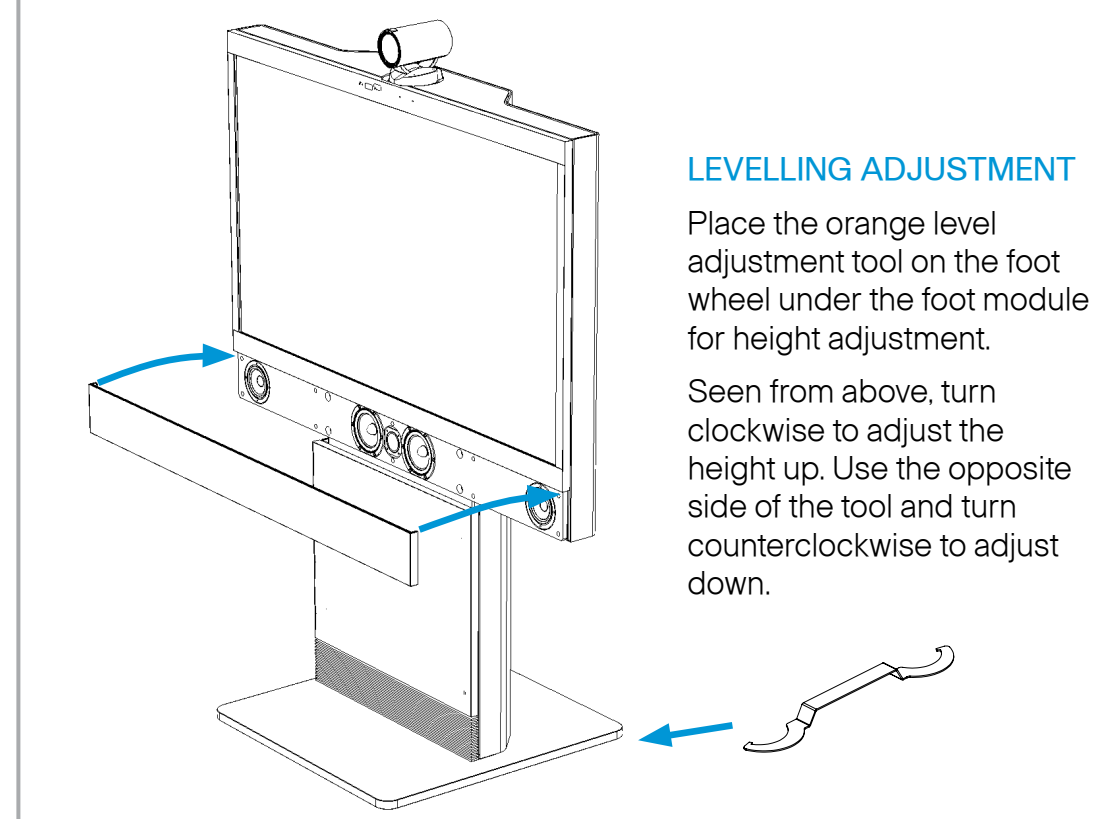


* For countries with 60Hz current frequency you must set the PrecisionHD 1080p camera DIP switch to: 00100.



9 Finishing up

1. Use the levelling adjustment tool to adjust the height of the system to make it stable (stand-alone foot module only).
2. Remove the plastic cover in front of the monitor.
3. Remove the plastic foil on the monitor frame.
4. Snap on the speaker grille to the front.
5. Use the supplied cloth to clean the system.



LEVELLING ADJUSTMENT

Place the orange level adjustment tool on the foot wheel under the foot module for height adjustment.

Seen from above, turn clockwise to adjust the height up. Use the opposite side of the tool and turn counterclockwise to adjust down.

10 Connect the system

1. Open the rear door and route the cables out through the opening at the lower part of the door.
2. Close the rear door carefully.
3. Place the microphones on the table, connect the microphone cables and place the PC cable on the table.
4. Connect the Ethernet cable.
5. Connect the power cable, use the country specific power cable that came with the system.
6. Open the front door and turn on the monitor.
7. Follow the instructions in the accompanying Touch Screen CS installation guide to connect and initialize the touch screen.
8. The system should be up and running in a few minutes.

