

How to Demo

CSE-800

Part numbers:

R9861580NA, R9861580EU, R9861580CN

BARCO

Visibly yours

Table of Contents

1.	Introduction	3
2.	Prepare a demonstration	4
2.1.	Required equipment	4
2.2.	How to get started	4
3.	Demonstration	5
3.1.	The ClickShare Button	5
3.2.	The ClickShare App	5
3.3.	AirPlay (only for the CSE-range)	5
3.4.	Google Cast (only for the CSE-range)	5
3.5.	The ClickShare Configurator Web UI	6
3.6.	The legacy inputs (HDMI inputs)	6
3.7.	Annotation on laptop	6
3.8.	Annotation and blackboarding (requires a touch screen)	6
3.9.	Demonstrating moderation	7

1. Introduction

The ClickShare CSE-800 is a wireless presentation solution designed for the boardroom and large meeting room. Up to 64 users can present anywhere, any time, with full integration for legacy equipment. Blackboarding and annotation functions empower interactive teamwork, while four ClickShare buttons enable multiple users to share on screen simultaneously.

Set up quickly and easily, with no software, no training and no cables. Only minimal IT support is required, slashing trouble tickets and delivering a strong ROI. Keep your data safe behind the firewall, with secure network integration providing the freedom to share your work with confidence. Conquer in the boardroom and inspire in the conference room with pin-sharp dual 4K video output.

The sole purpose of this document is to guide you in your demo. The information contained in this demo is proprietary to Barco and shall not be reproduced or disclosed in whole or in part, or used for any design or manufacture except when such user possesses direct written authorization from Barco.

2. Prepare a demonstration

2.1. Required equipment

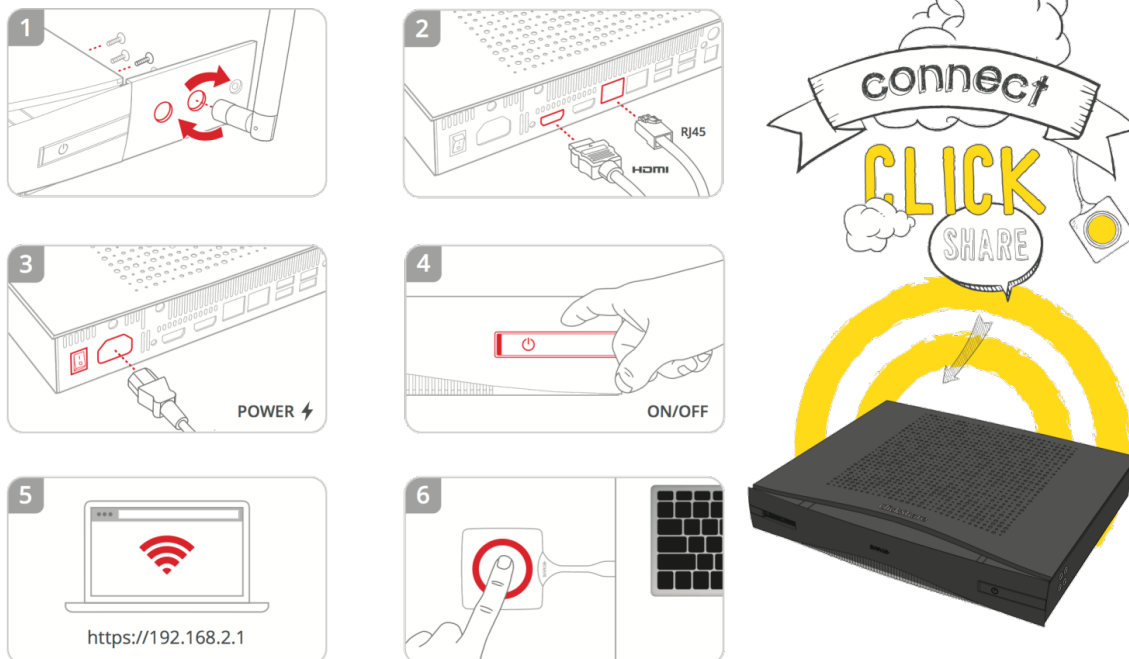
Minimal requirements

- 4K Monitor / Projector with HDMI input for easy 1:1 connection
(otherwise an adaptor can be used e.g. HDMI-to-DP)
- The CSE-800 ClickShare Set (Base Unit, Tray and 4 Buttons)
- PC to connect Button / mobile device running app

Optional requirements

- Legacy input source and HDMI cable
(e.g. VC camera or stationary PC)
- Touch screen for interactivity features

2.2. How to get started



1. Screw the antennas on to the connectors at the back of the Base Unit
2. Connect the Base Unit to the display or projector via HDMI for best Audio and Video transmission optionally connect the network cable and/or audio if required.
3. Connect the ClickShare Base Unit to the power supply.
4. Now turn on the Base Unit. During start up, the LED status strips will go from static red, to flashing white, and to static white.
5. Configure the Base Unit if required by accessing the ClickShare Configurator.
6. That's it - you should now see the ClickShare wallpaper on your meeting room display. Connect the Button to a PC or Mac, launch the ClickShare App and try to share.

3. Demonstration

3.1. The ClickShare Button

- Plug a Button into your PC (running Windows OS, Mac OS)
- If the **ClickShare** launcher is not installed:
 - Go to the drive showing the ClickShare Button
 - Click the .exe file to launch the application
 - The application starts (nothing will be installed) and a small symbol (red cycle) is shown in the systray
 - Now you can push the button to share your screen
- If the ClickShare launcher is installed:
 - Automatic recognition of the Button
 - The application starts (nothing will be installed) and a small symbol (red cycle) is shown in the systray
 - Now you can push the button to share your screen

3.2. The ClickShare App

- To connect to the Base Unit's Wi-Fi network, you go first to Settings, Wi-Fi and select "ClickShare-XXX" from the network list (password: "clickshare")
- Open the ClickShare app
- Share a picture
 - Click on the document or picture function to select a document or picture you want to show. You can now select a photo [browse to a photo] and share it [tap on share button]
 - You can scroll through photos [scroll]
- Use annotation
 - Take a snapshot of an object. Once prompted, share it on the screen
 - Activate the annotation button and start to annotate on the picture

3.3. AirPlay (only for the CSE-range)

- To connect to the Base Unit's Wi-Fi network, you go first to Settings, Wi-Fi and select "ClickShare-XXX" from the network list (password: "clickshare")
- You activate AirPlay and select the Base Unit in the list of available AirPlay receivers
- You can share from your Apple device whether it is a laptop, an iPad or an iPhone

3.4. Google Cast (only for the CSE-range)

- Make sure the Google Cast application or extension is installed
- To connect to the Base Unit's Wi-Fi network, you go first to Settings, Wi-Fi and select "ClickShare-XXX" from the network list (password: "clickshare")
- You activate Google Cast by selecting "share your screen" from the Google Home application on your mobile device or Google Cast extension from your Chrome browser

3.5. The ClickShare Configurator Web UI

- Connect your PC to the ClickShare Base Unit's Wi-Fi network
 - You go first to Settings, Wi-Fi and select "ClickShare-XXX" from the network list
 - Log in using the password [*type the default password, clickshare*]
- In your web browser's address bar, type "192.168.2.1"
 - Default user name is "admin"
 - Default password is "admin"
- Skim through the different pages to show the configuration options

3.6. The legacy inputs (HDMI inputs)

- Connect a VC camera or stationary PC via HDMI to the input of the ClickShare
- Power on the legacy device and make sure it is playing content
- The content will show up on screen automatically
- Power off the legacy source to show the auto-layout/switching capabilities
- **Optional:** when a Button source is connected at the same time you can long press to be the only source sharing, press again to go off-screen and the legacy source will come on screen again

3.7. Annotation on laptop

- With the Button plugged into your PC, press the arrow at the top of the screen to see the tools available
- With the pen tool selected, draw something on the screen
- Deselect the pen tool to show that you can still use your PC in normal operation mode
- You can hide the tools by pressing the arrow at the top of the screen again, The annotations will fade away automatically
- If a touch screen is connected, one can annotate on the full composition using the touch screen

3.8. Annotation and blackboarding (requires a touch screen)

- Verify that a touch screen is connected
 - Connect the HDMI input of the touchscreen to the HDMI output of the ClickShare
 - Connect the USB of the touchscreen to an USB port of the ClickShare
- The ClickShare will detect the touchscreen automatically and adapt the functionality
- Tap with more than one finger on the touch screen
- Choose between blackboarding or annotation
- When choosing for annotation:
 - A screen capture is taken and one can annotate on top of the screen capture
 - Tap on the pen to draw a circle around the shared image
 - You can save the annotation session by tapping the save Button, all participants connected via a Button will have the option to save the session
- When choosing for blackboarding
 - Use the pen to scribble on the board. Change the color, change the pen size, erase.
 - You can save the blackboarding session by tapping the save Button, all participants connected via a Button will have the option to save the session
 - Tap the small present icon in the bottom right to return to the default sharing mode
 - You can go back to blackboarding and continue whenever you want

3.9. Demonstrating moderation

- With the Button plugged into your PC, click the systray icon
- Within the systray menu click on "start moderation"
- The moderation app will now come up
- At the top of the app you can see a live display representation, which is update together with the real displays
- At the bottom you get an overview of all the sources sharing but not on the composition
- Each source can only be added once to each display, you can drag and drop any source to the display representation
- Note that a red border around the screen preview indicates if a source is on screen
- Drag and drop a source off the screen to remove it
- Close the moderation app again, auto-layout will take over again