
TANDBERG

MXP

Software Release Notes

Software Version F7

D50519 revision 1.0

May 2008

TABLE OF CONTENTS

DOCUMENT REVISION HISTORY.....	3
SOFTWARE RELEASE NOTES FOR TANDBERG MXP ENDPOINTS VERSION F7.0.....	4
Introduction	4
New Features	4
<i>Video</i>	4
<i>Network</i>	6
<i>User Interface</i>	7
<i>Security</i>	11
<i>API \ XML</i>	12
<i>Usability</i>	12
Changes and Improvements since Previous Version	14
<i>Video</i>	14
<i>Audio</i>	15
<i>Network</i>	15
<i>IP</i>	16
<i>User Interface</i>	17
<i>Security</i>	18
<i>Web Interface</i>	19
<i>APIXML</i>	19
<i>Usability</i>	20
<i>Inter-Op</i>	20
Supplemental Notes	21
<i>Software Filenames</i>	21
<i>Getting the Software</i>	21
<i>Installation</i>	21
<i>References</i>	21
Known Limitations.....	22
<i>TANDBERG</i>	22
<i>Polycom</i>	23
<i>RADVISION</i>	24
<i>Sony</i>	24
Interoperability Testing	25
<i>H.323 Gatekeepers/Traversal Servers</i>	25
<i>SIP Registrars/Proxies</i>	25
<i>SIP Client Applications</i>	25
<i>Gateway Interoperability</i>	25
<i>MCU Interoperability</i>	25
<i>Streaming Servers</i>	26
<i>Endpoint Interoperability</i>	26

DOCUMENT REVISION HISTORY

Revision 1.0 Release of F7.0, Initial Version

SOFTWARE RELEASE NOTES FOR TANDBERG MXP ENDPOINTS VERSION F7.0

Introduction

These release notes describe the new features and capabilities included in the TANDBERG MXP Endpoints software version F7.0 released on 21 May 2008.

Note: This software applies to all MXP endpoints that run the F series of software. The TANDBERG 150MXP does not run F software, but runs L series software. Statements and functionality in this document do not apply to the TANDBERG 150MXP system. Please see the Software Release Document for L series software.

Camera Software Upgrade

F7.0 software will automatically upgrade the Precision HD camera to software version S01692-3.0Final [ID:30031] when connected to the TANDBERG High Speed Serial Interface (THSI – Data Port 2). This software upgrade will occur 30 seconds after the codec restarts the second time after the endpoint software upgrade. The Precision HD camera is still functional during the upgrade process, but will restart automatically once the software is loaded resulting in no video for 15 seconds.

New Features

Video

PIP/POP Animation

F7.0 software supports animation displayed locally on the systems of the Picture in Picture (PIP) and Picture Outside Picture (POP) picture layouts. The PIP animation will now slide the PIP video window to the corners of the screen when the picture layout is set for PIP and the Layout button is pressed on the remote control. When the picture layout is set for POP the animation will slide the POP video windows in and out when the Layout button is pressed on the remote control. The animation feature will also fade in and out the video of the remote site when calls are connected or disconnected as well as the dual stream (H.239) when activated. The animation feature will also slide the video layouts of the MultiSite layouts when they changes during a call. The animation feature is enabled by default, but can be disabled from the data port with the following command:

xConfiguration Video Outputs Animation: <On/Off>

Availability: 8000 MXP Profile, 6000 MXP Profile, 6000 MXP Portable, 6000 MXP Integrator, Maestro MXP, 3000 MXP Profile, 3000 MXP Portable, 3000 MXP Integrator, Centric 1500 MXP, Centric 1700 MXP, Centric 1000 MXP, Edge 95/85/75 MXP, Set-Top 990/880/770/550 MXP, Tactical MXP

Restrictions: None.

Dynamic Resolution

The TANDBERG MXP endpoints will now dynamically adjust the resolution throughout an active H.323 and/or SIP call to provide the best video quality to the end user, given the environmental conditions, bandwidth available, etc. The Dynamic Resolution settings is disabled by default, but can be enabled from the User Interface > Control Panel > Call Quality menu.



Figure 1: Call Quality

- Availability: 8000 MXP Profile, 6000 MXP Profile, 6000 MXP Portable, 6000 MXP Integrator, Maestro MXP, 3000 MXP Profile, 3000 MXP Portable, 3000 MXP Integrator, Centric 1500 MXP, Centric 1700 MXP, Centric 1000 MXP, Edge 95/85/75 MXP, Set-Top 990/880/770/550 MXP, Tactical MXP
- Restrictions: None

Conference Video Text

F7.0 software supports the displaying of the site names within a MultiSite conference of the sites connected and of the local MultiSite host. The conference video text feature is enabled by default with the “Auto” setting configured to display the names for 5 seconds when sites are connected. This can be adjusted to always display the site names, or be disabled from displaying the names altogether. The time the text is displayed can be adjusted from 0 to 30 seconds when the “Auto” setting is used. The Conference Video Text is controlled by the data port command:

```
xConfiguration Conference VideoText: <On/Off/Auto>
xConfiguration Conference VideoTextTimeout: <0..30>
```

- Availability: 8000 MXP Profile, 6000 MXP Profile, 6000 MXP Portable, 6000 MXP Integrator, Maestro MXP, 3000 MXP Profile, 3000 MXP Portable, 3000 MXP Integrator, Centric 1500 MXP, Edge 95/85 MXP, Set-Top 990/880 MXP, Tactical MXP
- Restrictions: MultiSite Option required.
Not available on the Centric 1000 MXP, Edge 75 MXP, Set-Top 770/550, Public Compass MXP, Public Utility MXP.

Network

H.320

F7.0 software supports the sending of an asterisk at the beginning of the dialing string by entering the backslash and then the asterisk “*” characters. This function was added for certain ISDN switches that may require a special dialing string. If multiple asterisks are required in the dialing string then enter “**”, etc. The MXP Network Profiles can also be configured for adding the asterisk to the dialing string.

Availability: 8000 MXP Profile, 6000 MXP Profile, 6000 MXP Portable, 6000 MXP Integrator, Maestro MXP, 3000 MXP Profile, 3000 MXP Portable, 3000 MXP Integrator, Edge 95/85/75 MXP, Set-Top 990/880/770/550 MXP, Tactical MXP, Public Compass MXP, Public Utility MXP.

Restrictions: Bandwidth option may be required
Not available on the Centric 1700 MXP

SIP

F7.0 software supports OCS Presence Publishing of “Available” and “In a Call” which is displayed in the Microsoft Office Communicator (MOC) client application.

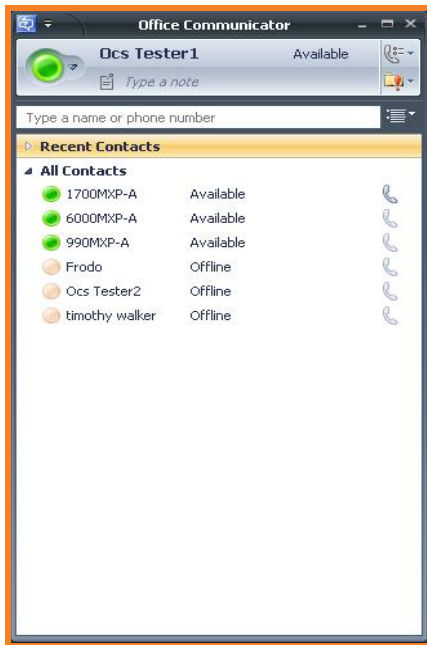


Figure 2: SIP “Available” Presence

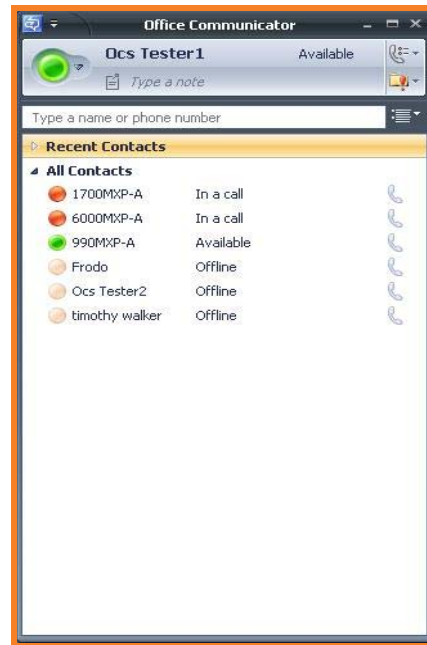


Figure 3: SIP “In a Call” Presence

Availability: 8000 MXP Profile, 6000 MXP Profile, 6000 MXP Portable, 6000 MXP Integrator, Maestro MXP, 3000 MXP Profile, 3000 MXP Portable, 3000 MXP Integrator, Centric 1700 MXP, Centric 1500 MXP, Centric 1000 MXP Edge 95/85/75 MXP, Set-Top 990/880/770/550 MXP, Tactical MXP, Public Compass MXP, Public Utility MXP.

Restrictions: None.

Interworking (Dual Streams)

F7.0 software supports dual streams of 4CIF in an interworking call through the TANDBERG Video Communication Server (VCS) of H.323-to-SIP \ SIP-to-H.323.

Availability: 8000 MXP Profile, 6000 MXP Profile, 6000 MXP Portable, 6000 MXP Integrator, Maestro MXP, 3000 MXP Profile, 3000 MXP Portable, 3000 MXP Integrator, Centric 1700 MXP, Centric 1500 MXP, Centric 1000 MXP Edge 95/85/75 MXP, Set-Top 990/880/770/550 MXP, Tactical MXP, Public Compass MXP, Public Utility MXP.

Restrictions: Requires TANDBERG Video Communication Server (VCS) Software Ver X2.0 or higher.

User Interface

New Volume Bar

F7.0 software supports a new volume bar with an escalating wedge moving upwards and color indicator for maximizing the volume.



Figure 4: Volume Bar

Availability: 8000 MXP Profile, 6000 MXP Profile, 6000 MXP Portable, 6000 MXP Integrator, Maestro MXP, 3000 MXP Profile, 3000 MXP Portable, 3000 MXP Integrator, Centric 1700 MXP, Centric 1500 MXP, Centric 1000 MXP Edge 95/85/75 MXP, Set-Top 990/880/770/550 MXP, Tactical MXP, Public Compass MXP, Public Utility MXP.

Restrictions: None.

Show Call Duration

F7.0 software supports call duration of active calls and will display a call timer on the screen at the bottom right hand corner. The feature is disabled by default, but can be enabled from the user Interface under > Control Panel > General > General Menu Settings.

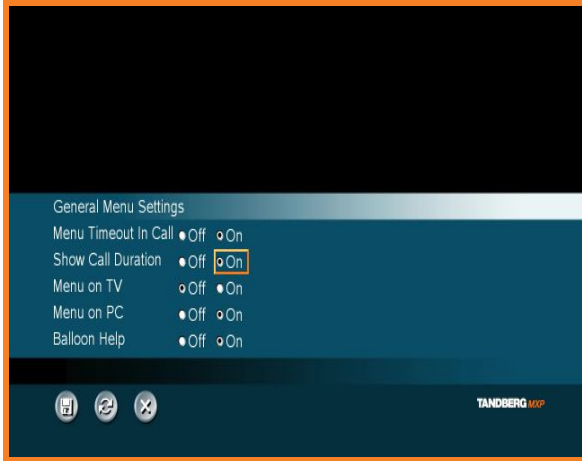


Figure 5: General Menu Settings

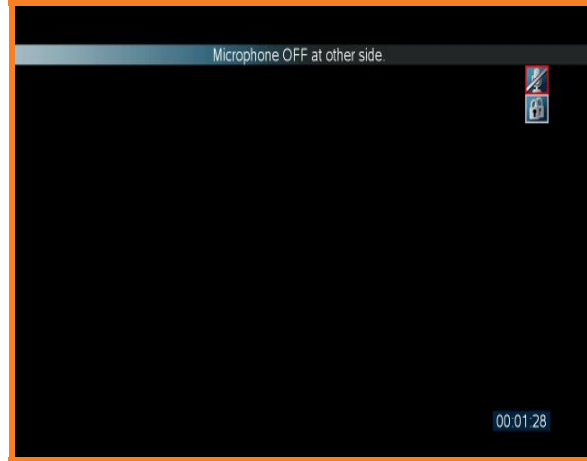


Figure 6: Call Duration

Availability: 8000 MXP Profile, 6000 MXP Profile, 6000 MXP Portable, 6000 MXP Integrator, Maestro MXP, 3000 MXP Profile, 3000 MXP Portable, 3000 MXP Integrator, Centric 1700 MXP, Centric 1500 MXP, Centric 1000 MXP Edge 95/85/75 MXP, Set-Top 990/880/770/550 MXP, Tactical MXP, Public Compass MXP, Public Utility MXP.

Restrictions: None.

Display Welcome Time

F7.0 software supports the ability of disabling/enabling the date and time displayed at the bottom right hand corner of the welcome screen. This feature is disabled by default, but can be enabled in the user interface under > Control Panel > Menu Settings > Startup > Display Welcome Time.

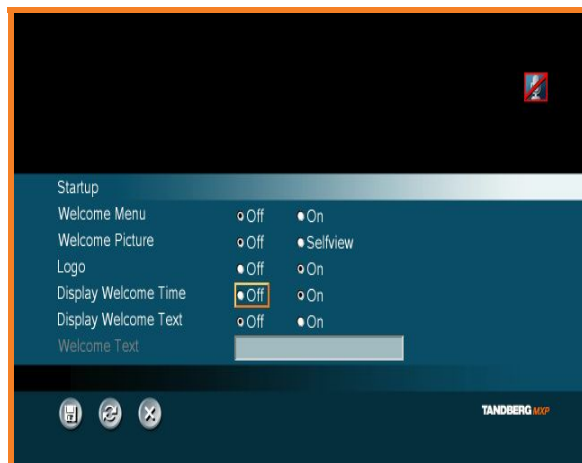


Figure 7: Display Welcome Time

- Availability: 8000 MXP Profile, 6000 MXP Profile, 6000 MXP Portable, 6000 MXP Integrator, Maestro MXP, 3000 MXP Profile, 3000 MXP Portable, 3000 MXP Integrator, Centric 1700 MXP, Centric 1500 MXP, Centric 1000 MXP Edge 95/85/75 MXP, Set-Top 990/880/770/550 MXP, Tactical MXP, Public Compass MXP, Public Utility MXP.
- Restrictions: NTP Server needs to be configured for the date and time to be displayed.
Data and Time settings need to be configured.

Danish Language

F7.0 software supports the addition of Danish language to the menu system.

- Availability: 8000 MXP Profile, 6000 MXP Profile, 6000 MXP Portable, 6000 MXP Integrator, Maestro MXP, 3000 MXP Profile, 3000 MXP Portable, 3000 MXP Integrator, Centric 1700 MXP, Centric 1500 MXP, Centric 1000 MXP Edge 95/85/75 MXP, Set-Top 990/880/770/550 MXP, Tactical MXP, Public Compass MXP, Public Utility MXP.
- Restrictions: None

Icons Placement

F7.0 software supports the ability of placing the icons normally displayed on the upper right hand corner of the screen to the upper left hand corner. Default setting is Top Rightt, but can be set to the Top Left from the user interface under > Control Panel > Menu Settings > Icons > Icon Placement.



Figure 8: Icons

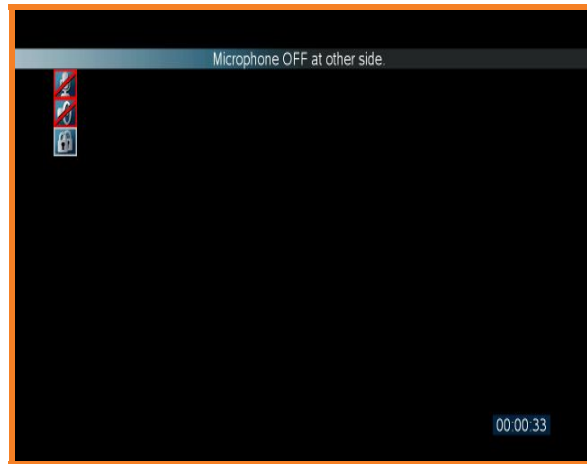


Figure 9: Icons Placement

- Availability: 8000 MXP Profile, 6000 MXP Profile, 6000 MXP Portable, 6000 MXP Integrator, Maestro MXP, 3000 MXP Profile, 3000 MXP Portable, 3000 MXP Integrator, Centric 1700 MXP, Centric 1500 MXP, Centric 1000 MXP Edge 95/85/75 MXP, Set-Top 990/880/770/550 MXP, Tactical MXP, Public Compass MXP, Public Utility MXP.
- Restrictions: None.

H.331 Attention Window

F7.0 software supports a H.331 Attention window to inform end-users of what may occur if H.331 is enabled when this is not necessary and confirms the activation for H.331. The H.331 setting is used for certain networks and should not be enabled if simplex mode is not needed.

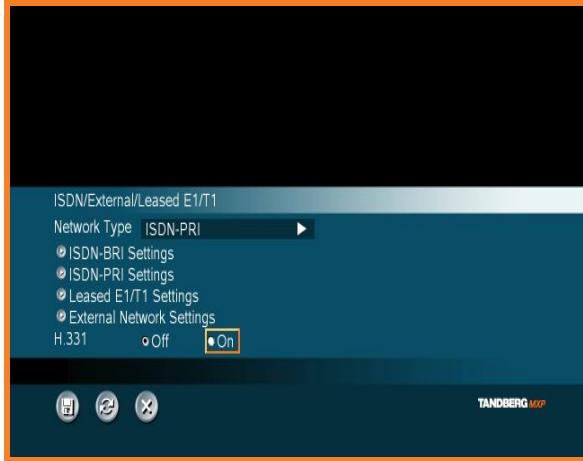


Figure 10: ISDN/External/Leased E1/T1

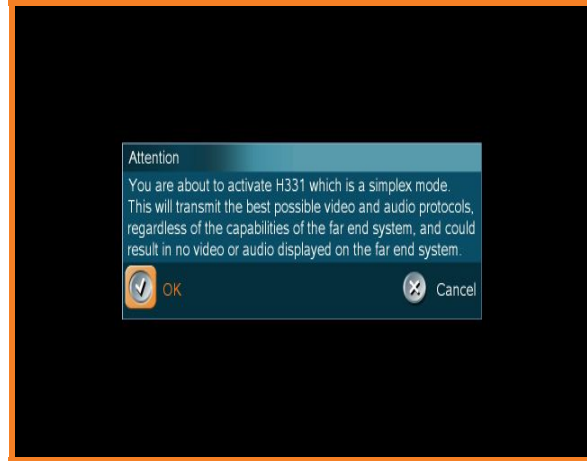


Figure 11: H331 Attention Window

Availability: 8000 MXP Profile, 6000 MXP Profile, 6000 MXP Portable, 6000 MXP Integrator, Maestro MXP, 3000 MXP Profile, 3000 MXP Portable, 3000 MXP Integrator, Centric 1500 MXP, Centric 1000 MXP, Edge 95/85/75 MXP, Set-Top 990/880/770/550 MXP, Tactical MXP, Public Compass MXP, Public Utility MXP.

Restrictions: Bandwidth option may be required.
Not available on the Centric 1700 MXP.

Kiosk Mode One Click Connect

F7.0 software supports a "One Click Connect" from Kiosk Mode. This allows the systems to call the first entered number in "My Contacts" of the Phone Book when the green connect button is pressed on the remote control.

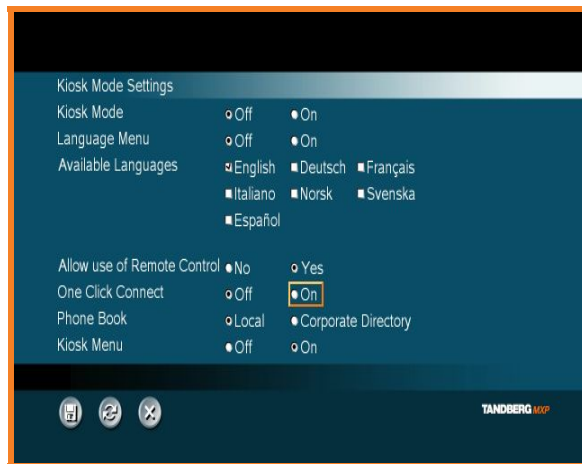


Figure 12: Kiosk Mode "One Click Connect"

Availability: 8000 MXP Profile, 6000 MXP Profile, 6000 MXP Portable, 6000 MXP Integrator, Maestro MXP, 3000 MXP Profile, 3000 MXP Portable, 3000 MXP Integrator, Centric 1500 MXP, Centric 1000 MXP, Edge 95/85/75 MXP, Set-Top 990/880/770/550 MXP, Tactical MXP, Public Compass MXP, Public Utility MXP.

Restrictions: None.

Security

Secure Management (HTTPS)

F7.0 software now supports secure HTTPS communications towards a management system, such as the TANDBERG Management Suite (TMS). Included with this is a new Root Certificate upload area under 'System Configuration' > 'Certificate Management' as well as 2 new API commands. For configuring the protocol which is used for the External Manager, the following API command is used:

xConfiguration ExternalManager Protocol: <HTTP/HTTPS>

Note: Default setting is 'HTTP'.

For configuring the system to verify the server certificate with the uploaded Root Certificate, the below API command is used:

xConfiguration HTTPS VerifyServerCertificate: <On/Off>

Note: Default setting is 'Off'.

Root Certificate upload area from Web Interface:

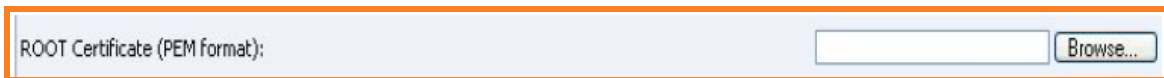


Figure 13: ROOT Certificate

Availability: 8000 MXP Profile, 6000 MXP Profile, 6000 MXP Portable, 6000 MXP Integrator, Maestro MXP, 3000 MXP Profile, 3000 MXP Portable, 3000 MXP Integrator, Centric 1700 MXP, Centric 1500 MXP, Centric 1000 MXP, Edge 95/85/75 MXP, Set-Top 990/880/770/550 MXP, Tactical MXP, Public Compass MXP, Public Utility MXP

Restrictions: Requires TANDBERG Management Suite (TMS) Software Ver 11.9 or higher.

For more information please refer to document D50520 TANDBERG Secure Management available at <http://www.tandberg.com/>

Call Logs

F7.0 software supports the ability of disabling all of the call logging for Placed Calls, Missed Calls, and Received Calls in the Phone Book. Default call logging is on, but can be disabled with the following data port command:

xConfiguration Directory CallLog: <On/Off>

Availability: 8000 MXP Profile, 6000 MXP Profile, 6000 MXP Portable, 6000 MXP Integrator, Maestro MXP, 3000 MXP Profile, 3000 MXP Portable, 3000 MXP Integrator, Centric 1700 MXP, Centric 1500 MXP, Centric 1000 MXP, Edge 95/85/75 MXP, Set-Top 990/880/770/550 MXP, Tactical MXP, Public Compass MXP, Public Utility MXP

Restrictions: None

API \ XML

For more details, please reference to the F7 Codec References Manual, document D13887 Rev.07

Usability

Login Banner

F7.0 software supports a custom login banner that will display text information on systems within web interface, telnet, ftp, and ssh. This is created within notepad and named as “loginbanner.txt” and is loaded into the ftp server, user folder of the endpoint.

Example of the login banner displayed in the Web interface, Telnet, ftp and ssh:

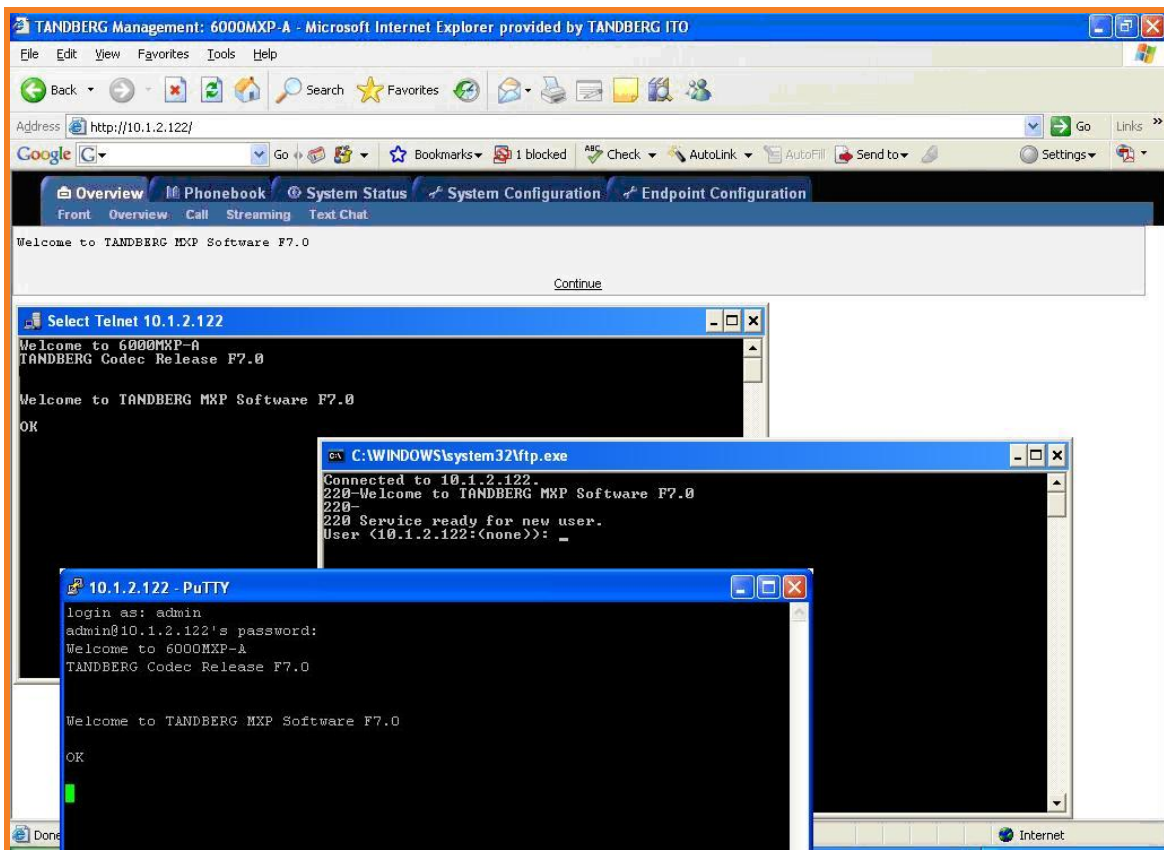


Figure 14: Login Banner

Availability: 8000 MXP Profile, 6000 MXP Profile, 6000 MXP Portable, 6000 MXP Integrator, Maestro MXP, 3000 MXP Profile, 3000 MXP Portable, 3000 MXP Integrator, Centric 1700 MXP, Centric 1500 MXP, Centric 1000 MXP, Edge 95/85/75 MXP, Set-Top 990/880/770/550 MXP, Tactical MXP, Public Compass MXP, Public Utility MXP

Restrictions: Spaces in-between paragraphs are not supported in the login banner. If spaces are used between paragraphs then the second, third and so on, paragraphs will not be displayed in the login banner.

Max Call Bandwidth

F7.0 supports the total max call bandwidth for the systems even if the endpoint has the MultiSite options installed. This setting will affected incoming and outgoing calls on H323, SIP, and H320 networks. This setting is available with a data port command and is disabled by default. The data port command is:

xConfiguration MaxBandwidth: <128..10240>

Availability: 8000 MXP Profile, 6000 MXP Profile, 6000 MXP Portable, 6000 MXP Integrator, Maestro MXP, 3000 MXP Profile, 3000 MXP Portable, 3000 MXP Integrator, Centric 1700 MXP, Centric 1500 MXP, Centric 1000 MXP Edge 95/85/75 MXP, Set-Top 990/880/770/550 MXP, Tactical MXP, Public Compass MXP, Public Utility MXP.

Restrictions: Endpoint needs to be restarted for setting to take affect.

1000MXP cabinet button

F7.0 software supports the ability of disabling the cabinet button on the front of the TANDBERG 1000MXP from manually answering a call and switching to the Headset mode. The command to disable\enable the cabinet button is available through the data port (Telnet) and is enabled by default. The command is:

xCommand KeyDisable key: Cabinet

xCommand KeyEnable key: Cabinet

Availability: Centric 1000 MXP

Restrictions: 8000 MXP Profile, 6000 MXP Profile, 6000 MXP Portable, 6000 MXP Integrator, Maestro MXP, 3000 MXP Profile, 3000 MXP Portable, 3000 MXP Integrator, Centric 1700 MXP, Centric 1500 MXP, Centric 1000 MXP Edge 95/85/75 MXP, Set-Top 990/880/770/550 MXP, Tactical MXP, Public Compass MXP, Public Utility MXP.

Horizontal PC adjustment

F7.0 software supports the ability of adjusting the PC video horizontally displayed on the endpoints first and second monitors. This allows the end-use to adjust the PC video so that it's displayed in the center of endpoints monitors, which may be a little off center in some cases. This feature is available through the data port with the following command:

xConfiguration Video Inputs Source [1..6] HorizAdjust: <0..255>

Availability: 8000 MXP Profile, 6000 MXP Profile, 6000 MXP Portable, 6000 MXP Integrator, Maestro MXP, 3000 MXP Profile, 3000 MXP Portable, 3000 MXP Integrator, Centric 1700 MXP, Centric 1500 MXP, Centric 1000 MXP Edge 95/85/75 MXP, Set-Top 990/880/770 MXP, Tactical MXP, Public Compass MXP, Public Utility MXP.

Restrictions: Not available on the Set-Top 550 MXP.

Recommended setting is 128

Screensaver Delay

F7.0 software supports the additional adjustment of the screensaver from 1 to 480 minutes. This allows the end-users to set the preferred delay when the screensaver will activate. The setting is available through the data port with the following command:

xConfiguration Screensaver Delay: <1..480>

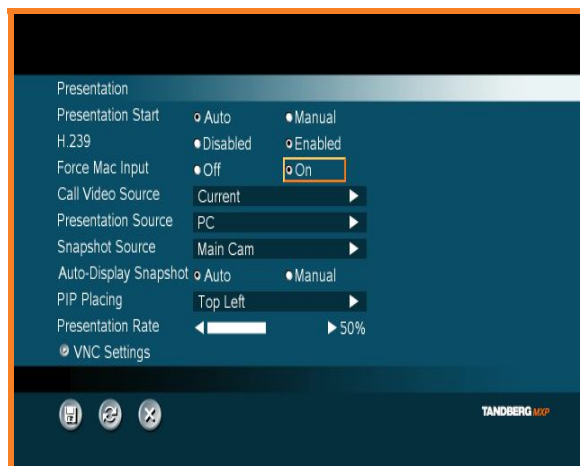
Availability: 8000 MXP Profile, 6000 MXP Profile, 6000 MXP Portable, 6000 MXP Integrator, Maestro MXP, 3000 MXP Profile, 3000 MXP Portable, 3000 MXP Integrator, Centric 1700 MXP, Centric 1500 MXP, Centric 1000 MXP Edge 95/85/75 MXP, Set-Top 990/880/770/550 MXP, Tactical MXP, Public Compass MXP, Public Utility MXP.

Restrictions: None.

Changes and Improvements since Previous Version

Video

- Corrected the sluggish movement of the PC video when the endpoint has “Use Screen as Local PC monitor” and not able to move passed the logo screen during a VoIP (telephone) call [Ref. # 50140].
- Improved lip synchronization with HD w720p video format [Ref. # 43413].
- Changed the transmit video to 4CIF as the default video format in a 4 Split (CP4) MultiSite video layout [Ref. # 49644]
- Corrected the shake or video jump on an Edge MXP when the video would display an older video frame. [Ref. # 49504].
- Resolved an issue that will now allow an endpoint that initiates a MultiWay conference to send dual streams [Ref. # 47272].
- Corrected the displaying of a oversized PIP (picture in picture) video window when first appears [Ref. # 48204]
- Improvements to the decoder to be more robust in preventing a flashing video effect of QSIF displayed on the monitor [Ref. # 49993].
- Corrected the possibility of no video displayed when you resume from H.323 hold [Ref. # 43316].
- Corrected the scaling of PC image to prevent the PC image of being off or on top the framed border of the MultiSite [Ref. # 48475].
- Improvements to the decoder to prevent green video flash when endpoint takes the floor during a TANDBERG MPS conference [Ref. 48264].
- Corrected the displaying of VGA (Analog) video from a Mac computer (iMac, MacBook) to the MXP, by adding a setting in the use interface to specify the Mac input. This setting disables the digital EDID signal from the MXP input and allows only the analog EDID VGA signal. This setting is available from the User Interface > Control Panel > Presentation Settings > Force Mac Input. [Ref. # 40106].



Camera

- Improvements to w576p (1024x576) video resolution.
- Improvements to the transition of w288p (512x288) to HD w720p (1280x720).
- Improvements to display the correct aspect ratio for w448p video format.

Audio

- Corrected the Mic signal being routed to the loudspeaker when line in 3 (AUX) is changed to Mic and then changed back to 'On' on a 3000MXP web interface [Ref. # 48855].

Network

H.320

- Correct the frozen video/no video displayed during a H.320, H331 broadcast connection by sending an intra update to the far-end every 30 seconds. This intra update is automatically sent from the transmitting endpoint when "RS449/V.35 Compatible" is set as the "Network Clocking" and "H.331" is enabled. The intra update can also be manually configured from the data port to send the intra update to the far-end at a desired interval of 1 to 1000 seconds (0 = Off). The data port command is the following [Ref. # 47301].

xConfiguration Conference PeriodicIntra: <0..1000>

Note: The periodic Intra setting is supported over all networks of H.320, H323, and SIP when set manually, but should only be enabled when instructed by a TANDBERG representative.

- Corrected the reporting of "unknown cause (0)" which is not a valid ISDN cause code [Ref. # 50765].
- Corrected the possibility of the system not clearing the call properly when it receives a channel ID that indicates no-channel [Ref. # 47678]

H.323

- Corrected the initializing of H.460 (use or not) to the alerting and connecting messages when the endpoint is not registered to a gatekeeper [Ref. # 50601].
- Corrected the Diffserv TOS of the far-end system of sending all zeros for the SYN, ACK packets [Ref. # 47830].
- Corrected the missing crypto token in IRR responds from the endpoint when authentication is enabled and the gatekeeper queries the endpoint [Ref. # 50184].

SIP

- Improved dual streams handoff during encrypted SIP call between MXP endpoints [Ref. # 49677].
- Corrected the buffer allocation of illegal length H.323 messages being routed to the SIP stack, which could possible cause an unexpected restart [Ref. # 50687].
- Corrected the SIP registration to be sent when the "SIP Mode" is re-enabled [Ref. # 50865]
- Corrected the SIP "NOTIFY" RFC3265 which was not totally compliant [Ref. # 50290].

- Corrected the sending of a “require: timer” when the MXP is set for Microsoft as the Server Type and attempts to refresh the session as the “require: timer” is disliked by Microsoft OCS [Ref. # 49919].
- Improvements to the Hold and Transfer method for SIP [Ref. # 47666].
- Corrected the support on NTLM for multiple forest deployments [Ref. # 48593].
- Corrected the receiving of transaction before receiving the ACK, which could result in a failed call [Ref. # 46017].
- Corrected the reporting of the right error cause on the endpoint [Ref. # 47130].
- Corrected the duplicate capability of H.263 DuoVideo in SIP SDP [Ref. 47040].
- Corrected the function of SIP URI dialing in where we will route to the “A/AAAA” list lookup when there is a port number in the URI and uses the SRV record when no port is present in the URI [Ref. # 44863].
- Corrected the SIP session level SDP to accept all bandwidth specifies of CT, AS, and TIAS [Ref. 44108].

IP

DHCP

- Improved the retrieval of a DHCP address in where the endpoints will no longer time out after a certain amount of time if the endpoint does not receive a DHCP address. Now the endpoint will constantly try to obtain a DHCP address from the DHCP server. [Ref. # N/A].

DNS

- Corrected the DNS lookup search order for SRV and A/AAAA records when dialing a full URI address from an endpoint that is not registered to a gatekeeper. [Ref. # 50273].
- Corrected the endpoint when it received multiple IP address from a single DNS query and it loses communication with the first IP address. The endpoint will now successfully attempt to establish communicate with the next IP address in the list [Ref. # 50128].

SSH

- Corrected the SSH connection issue with PuTTY Ver 0.60 and Tera Term Pro Web Ver 3.1.3 [Ref. # 44537].

SNMP

- Improvements to SNMP to be more robust to tolerate second argument with NULL pointer [Ref. # 49150].

User Interface

- Corrected the bandwidth (call rate) which was missing from a phone book entire that was selected when you used the search function within the phone book [Ref. # 50979].
- Corrected the search feature in the Phone Book in where this will now find the first letters entered instead of just the first letter. Example: If “kj” is entered then “Kjell” will be displayed instead of “Kathy” [Ref. # 47799].
- Improvements to the “Menu Settings” in arranging this with sub menus of General Menu Settings, Kiosk Mode Settings, Startup, and Icons to make this more easier to manoeuvre through [Ref. # N/A].
- Improvements to the “H.323 Settings” menu in arranging the Gatekeeper setting in one sub menu for consolidating all the gatekeeper settings [Ref. # 48357].
- Corrected the wrong reporting of the call rate within the Call Status menu between a MXP and 150MXP over SIP [Ref. # 49411]
- Improved the indication of a missed call when the endpoint is set for “Use Screen as Local PC monitor”. When there is a missed call/calls an indication banner will be displayed on the bottom of the screen and by pressing the OK/Menu button on the remote will displayed these missed calls [Ref. # 47826].



- Added “Custom” to be displayed in the receive column video format of the Call Status menu. This would be displayed when the MXP endpoints receive a custom format like from the LifeSize Room systems at different call rates [Ref. # 46836].
- Removed the “(1280x720)” text that was displayed next to w720p video format from the Call Status menu. [Ref. # 48038].
- Removed the duplicate entry setting of “Access Code Off \ On” from the security menu. The “Access Code Off \ On” setting is still available from the Control Panel > General > Permissions menu [Ref. # 50594].
- Corrected the “Administrator Password” (Menu Password) from displaying the password in clear text in the “Security Settings” menu and in the “View Administrator Settings” menu [Ref. # 50480]

- Corrected the Attention window of the remote site when place on hold to display “Please wait, your call is on hold” [Ref. # 42947].
- Correct the possibility of having a double Attention window displayed on the monitor when the video output is manually changed [Ref. # 47945].
- Corrected the possibility of some directories or folders in the Phone Book not appearing [Ref. # 41714].
- Corrected the possibility of the menu getting into a slow response state when a H.323 call is placed on hold [Ref. # 43132].
- Improved the correct location of displaying the menus after calls are disconnected [Ref. # 48452].
- Corrected the ability of accepting calls with the green connect button if there are no menus displayed [Ref. # 43552, 48763].
- Corrected the restoring of the system parameters (system configuration) after a software upgrade to the pervious stored settings [Ref. # 47599, 50056, 47870, 50277].
- Removed the “Channel Status ISDN” page from the 1700MXP since this system is only H.323 and SIP [Ref. # 49861].
- Corrected the possibility of the “Volume Bar” being displayed off the screen [Ref. # 47669].
- Changed the function of “Use Screen as Local PC monitor’ when enabled will also prevent the “Welcome Screen” from displaying. The “Welcome Screen” can still be enabled if desired from the Control Panel > Menu Settings > Startup [Ref. # 43241].
- Corrected the menu timing out when you have a system on hold [Ref. # 48618].
- Corrected the possibility of having one of the sites in the MultiSite not listed in the Site List [Ref. # 48652].
- Corrected the “Restore Defaults” icon to restore the defaults in the External Server Settings [Ref. #42626, 42627]
- Removed the “Natural Video Setting” from the user interface as this feature is for interlaced video iCIFiSIF video format. The TANDBERG Precision HD camera is a progressive video camera and wouldn’t select interlaced video to be transmitted. The “Natural Video Setting” is still supported and would be used if a SD camera is connected to the endpoint. The “Natural Video Setting” is available from the data port with the following command [Ref. # N/A].
- *xConfiguration Conference NaturalVideo: 384*

Security

- Improvements to a meta-tag in each ssi-file to insure that any sensitive content sent to the endpoint will not be cached [Ref. # 49276].
- Corrected the ability of disabling the switch port or PC Port for security reasons on the 1700MXP. The PC port is enabled by default, but can be disabled with the following data port command [Ref. # 50870]

xConfiguration PCPort Mode: <On/Off>

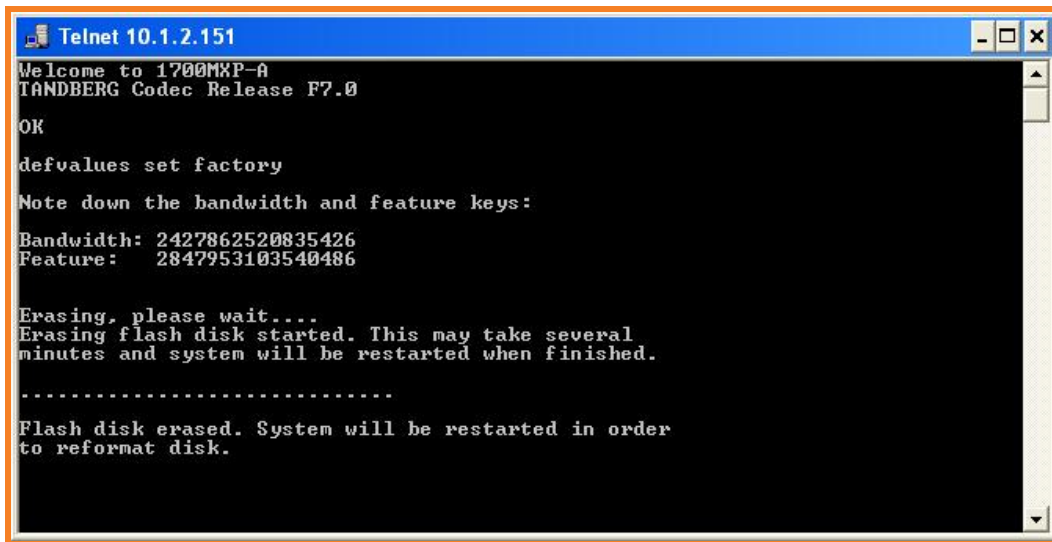
Web Interface

- Corrected the missing of the SIP Server Type in the SIP configuration menu of the web interface [Ref. # 47985].
- Corrected the missing encryption mode drop down box from the Security configuration setting in the web interface [Ref. # 47951].
- Corrected the reporting of [no-text] as the video format during a HD w720p call within web interface in the Overview Status and Participant page [Ref. # 48451, 48166].
- Corrected the ability of changing the video output resolution (VGA Out Quality & 2) for the monitors from the web interface [Ref. # 47509].
- Corrected the missing setting of “Allow HD 720p” from the Endpoint Configuration > General page of the web interface [Ref. # 47941].
- Corrected the missing setting of “Simple Menu” from the Endpoint Configuration > Menu page of the web interface [Ref. # 47942].
- General Web Interface typographical corrections [Ref. # 43357, 37787].

APIXML

- Corrected the feedback of “statin” for duo video when enabled and disabled [Ref. # 50935].
- Corrected the reporting of “status” to “Registered” in “status.xml” when the endpoint is registered to a SIP server [Ref. # 50855].
- Corrected the missing of the xcommand of “CallHold, CallResume, and CallTransfer [Ref. # 50263, 50264, 50265].
- Improvements to Data Port 2 (Camera Port) to be more tolerant in the case of the wrong camera being connected [Ref. # 50068].
- Improvements to Data Port 2 (Camera Port) on 3000MXP's when set to VISCA in the possibility of an unexpected restart [Ref. # 49952, 49752].
- Corrected the reporting of the camera location in “xstatus camera” after a camera preset are recalled [Ref. # 49198].
- Correct the reporting for the current video format of HD sources when “test” is entered in the data port [Ref. 47182].
- Corrected the missing selection of the 5 video sources and the 4 function keys on the TRC4 remote control for the “xCommand KeyPress” command [Ref. # 47446].
- Removed some debug printouts displayed from the data port [Ref. # 46473].

- Improved the “defvalues set factory” command to display the Bandwidth and Feature (option) keys to be noted for future uses [Ref. # 22222].



```
Telnet 10.1.2.151
Welcome to 1700MXP-A
TANDBERG Codec Release F7.0
OK
defvalues set factory
Note down the bandwidth and feature keys:
Bandwidth: 2427862520835426
Feature: 2847953103540486
Erasing, please wait...
Erasing flash disk started. This may take several
minutes and system will be restarted when finished.
.....
Flash disk erased. System will be restarted in order
to reformat disk.
```

Note: DO NOT issue this command unless instructed by a TANDBERG representative.

Usability

- Corrected the “Input” menu for appearing on screen when the Input Key Mode is set for manual and the Preset button is pressed on the TRC4 remote control [Ref. # 48728].
- Corrected the Camera Tracking not function with a TANDBERG Video Switch (TVS) [Ref. # 47976].
- Corrected the missing multisite directories from the all.prm and dir.prm file for the system parameters [Ref. # 38427].

Inter-Op

TANDBERG

- Corrected the no video displayed on TANDBERG Movi when connected to MXP endpoint software F6.3 [Ref. # 49657].
- Corrected the negotiation issue with a MXP Sw F6.x and Polycom PVX Sw 8.0.2 when they are not registered to a gatekeeper. Please refer to the H.323 section in the “Changes and Improvements since Previous Version” section [Ref. # 50601].

RADVISION

- Corrected the receiving of the DuoVideo/H.239 stream for the MXP endpoint that established a call through a Radvision Gateway Sw 5.5.2.0.5 (ISDN to H.323) into a MPS or MXP MultiSite conference [Ref. # 47269].

Supplemental Notes

Software Filenames

All MXP endpoints use the same software files. The correct software filenames are listed in the following table.

TANDBERG MXP Systems	Software	Serial Number Range
All systems that support AES Encryption	s50000fxx.pkg	All
All systems that do not support AES Encryption	s50001fxx.pkg	All

Getting the Software

Customers should contact their TANDBERG maintenance provider for support and assistance with their TANDBERG products, including release keys and software files. Upgrading to F7.0 will require the full F7.0 pkg file and a release key specific to the TANDBERG MXP endpoint to be upgraded.

Installation

Installation of F7.0 software can be accomplished through the local LAN via HTTP or FTP or remote upgrade from another MXP endpoint over an ISDN connection.

References

TANDBERG Website <http://www.tandberg.com>
TANDBERG FTP Site <http://ftp.tandberg.com>

For all documentation, please see the TANDBERG Support Website at <http://www.tandberg.com/support/documentation.php>

Known Limitations

TANDBERG

Ref. ID	Equipment	Limitations
49175	TANDBERG MXP Ver F7.0 (RSVP)	RSVP does not work as expected.
49218	TANDBERG MXP Ver F7.0 (SIP)	Currently there is an audio noise heard during an encrypted SIP connection to the 150MXP software Ver L5.0.
49223	TANDBERG MXP Ver F7.0 (SIP - DuoVideo)	SIP DuoVideo (Dual Streams) is not working as expected in a MultiSite ^{TF} Conference.
49218	TANDBERG MXP Ver F7.0 (SIP)	Currently there is an audio noise heard during an encrypted SIP connection to the 150MXP software Ver L5.0.
51323	TANDBERG MXP Ver F7.0 (Interworking Audio)	No AAC-LD audio will be transmitted from the H.323 side to the SIP side during an interworking call. Work around this by setting the AAC-LD 128 threshold within the Call Quality menu to 384kbps and above or disable AAC-LD audio.
51326	TANDBERG MXP Ver F7.0 (Interworking DuoVideo\H.239)	Currently only CIF and 4CIF video format is supported over the dual stream in an Interworking connection
50489	TANDBERG MXP Ver F7.0 (Video)	Currently there is a possibility of seeing a green video flash displayed on the second monitor when a call is disconnected.
50296	TANDBERG MXP Ver F7.0 (Video)	Currently there is no video displayed on a MXP when connected at 512kbps to a RADVISION Scopia MCU Ver 5.5.0.0.36. Video is established at call rates of 384kbps or 768kbps and above.
49951	TANDBERG MXP Ver F7.0 (Video)	Currently there is no video displayed to an eConf soft endpoint when the MXP makes a call above the set max bandwidth configured in the eConf.
51448	TANDBERG MXP Ver F7.0 (Data Port)	The max bandwidth setting of 10240 for the following data port command of "xConfiguration MaxBandwidth: <128..10240>" is incorrect. The max bandwidth is depended on the endpoint model, feature and bandwidth option loaded.
51950	TANDBERG MXP Ver F7.0 (Data Port)	The data port setting to adjusting the horizontal PC image on the endpoint "xConfiguration Video Inputs Source [1..6] HorizAdjust: <0..255>" only applies to input 5. This command will have no effect on the other input sources.
31114	TANDBERG MXP Ver F6.2 (Disconnecting)	When the MXP is calling out and is disconnected before the call completely connects, the menu may lock up. Press "Cancel" on the remote control to clear this.
43314	TANDBERG MXP Ver F6.2 (Profiles)	Profile names with spaces will not appear in the Profile list. To resolve, please use names without spaces (e.g. 'TestProfile' or 'Test.Profile')

51417	TANDBERG MXP Ver F7.0 (Web Interface)	Currently the "Dynamic Resolution" setting is missing from the web interface.
51418	TANDBERG MXP Ver F7.0 (Web Interface)	Currently the "Force Mac Input" setting is missing from the web interface.
51419	TANDBERG MXP Ver F7.0 (Web Interface)	Currently the "Icon Placement" setting is missing from the web interface.
51420	TANDBERG MXP Ver F7.0 (Web Interface)	Currently the "Display Welcome Time" setting is missing from the web interface.

Polycom

<i>Ref. ID</i>	<i>Equipment</i>	<i>Limitations</i>
N/A	Polycom VSX Ver 8.7.1 (Video)	Dialing between a PAL MXP and PAL VSX, the MXP will send H.263+ video at a call rate above 128kbps over ISDN.
N/A	Polycom VSX Ver 8.7.1 (Chair Control)	Chair control does not currently function with the VSX internal MultiPoint over ISDN.
N/A	Polycom EX/FX/VS4000 Ver 6.0.5 (MultiSite)	If a Polycom FX/EX/VS4000 is part of a MXP MultiSite and if the other sites are disconnected, resulting in a point-to-point connection with the FX/EX/VS4000, then this will result is frozen or no video displayed on the MXP.
N/A	Polycom HDX Ver 2.0.2-2461 (HD 720p)	The Polycom HDX system will currently not transmit w720p resolution to the MXP. The MXP will transmit w720p to the Polycom HDX.
43951	Polycom MGC Ver 9.1.0.8, 8.0.0.27 (HD Video)	Currently HD w720p is not automatically transmitted from MXP in a MGC H.323 voice switching conference at a call rate of 1472kbps or higher. To resolve this set the main camera to 'Sharpness' under 'Call Quality' > 'Video Quality' within the Control Panel.
48581	Polycom MGC Ver 9.0.1.8, 8.0.0.27 (H.239)	If H.239 is disabled in the MXP and you connect to a H.239 conference over ISDN. The MXP will connect as secondary (audio only).
48583	Polycom MGC Ver 9.0.1.8, 8.0.0.27 (H.239)	The H.239 hand-off currently does not work properly between MXP endpoints in the MGC H.323 conference.
48098	Polycom MGC Ver 9.0.1.8 (H.239)	Currently H.239 does not work with the MXP endpoints in a Continues Presence, 384kbps or lower H.323 conference.

RADVISION

<i>Ref. ID</i>	<i>Equipment</i>	<i>Limitations</i>
49175	Scopia MCU Ver 5.5.0.0.36 (Video)	When connecting to the Scopia MCU and sending w720p resolution, the MXP will not receive any video from the Scopia unless H.239 is enabled in the conference. Far End Camera Control fails in some conferences.
N/A	Scopia MCU Ver 5.5.0.0.36 (HD Video)	Possibility of seeing pixilation during a HD conference.
N/A	Scopia MCU Ver 5.5.0.0.36 (Call Rate)	During a 2Meg HD voice switching conference, the video format will drop to w448p when dual streams are launched. Once dual streams are stopped the video format will remain at w448p.
N/A	Scopia Gateway Ver 5.5.2.0.5 (Video)	Currently there is no video during an encrypted call through the Radvision Gateway. Disable Encryption in the Gateway to receive video.
N/A	Scopia Gateway Ver 5.5.2.0.5 (FECC)	Currently Far End Camera Control (FECC) only works from the H.323 side to the H.320 side.

Sony

<i>Ref. ID</i>	<i>Equipment</i>	<i>Limitations</i>
49175	Sony PCS-1 Ver 3.30 PCS-TL50 Ver 2.31 (Video)	Currently the MXP can hand-off H.239 back to the PCS-1 while receiving H.239 from the PCS-1. The PCS-1 cannot hand-off H.239 back to the MXP while received it from the MXP.

Interoperability Testing

The following systems have been tested and verified compatible with this software release.

H.323 Gatekeepers/Traversal Servers

<i>Equipment</i>	<i>Software Revision</i>	<i>Comments</i>
TANDBERG Gatekeeper	N5.2	
TANDBERG Border Controller	Q5.2	Both Assent and H.460.18/.19 traversal technologies are supported
TANDBERG Video Communication Server (VCS)	X2.0, X2.1	Both Assent and H.460.18/.19 traversal technologies are supported

SIP Registrars/Proxies

<i>Equipment</i>	<i>Software Revision</i>	<i>Comments</i>
TANDBERG Video Communication Server (VCS)	X2.0, X2.1	
Microsoft OCS 2007	3.0.6362.0	

SIP Client Applications

<i>Equipment</i>	<i>Software Revision</i>	<i>Comments</i>
Microsoft OC (Office Communicator) 2007	2.0.6362.0	

Gateway Interoperability

<i>Equipment</i>	<i>Software Revision</i>	<i>Comments</i>
TANDBERG MPS Gateway	J4.2	
TANDBERG Gateway	G3.2	
RADVISION Scopia Gateway	5.5.2.0.5	Set "tcs4Timeout" to 10 in Settings > Advanced Command of the gateway to resolve a DTMF tone timing issue.

MCU Interoperability

<i>Equipment</i>	<i>Software Revision</i>	<i>Comments</i>
TANDBERG MPS	J4.2	
TANDBERG MCU	D3.10	
TANDBERG\Codian 4210	2.3(1.5)	
TANDBERG\Codian 4505	2.3(1.5)	
Polycom MGC	8.0.0.27, 9.0.1.8	H.320 and H.323
RADVISION Scopia MCU	5.5.0.0.36	

Streaming Servers

<i>Equipment</i>	<i>Software Revision</i>	<i>Comments</i>
TANDBERG Content Server	S3.0	

Endpoint Interoperability

<i>Equipment</i>	<i>Software Revision</i>	<i>Comments</i>
TANDBERG MXP	F6.2, F6.3	H.320, H.323 and SIP
TANDBERG Personal Series	L5.0	H.320, H.323 and SIP
TANDBERG Classic	E5.3/B10.3	H.320 and H.323
TANDBERG Vision	C4.0	H.320 only
LifeSize	3.5.2(5)	H.323 only
Polycom PVX	8.0.2.0235	H.323
Polycom VSX	8.7.1	H.320 and H.323
Polycom HDX	2.0.2-2461	H.320 and H.323
Sony PCS-TL50	2.41	H.320 and H.323
TANDBERG Movi	2.45.1.3	SIP