



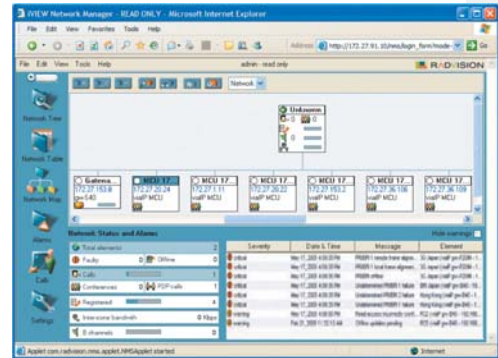
Video Management System (VMS) for Sony Video Networks

A comprehensive management solution for voice and video collaborative communications

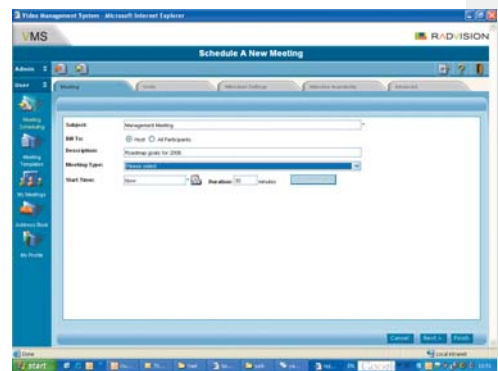
Efficiently manage and monitor your video network elements and easily schedule and control your meetings, for an optimal visual communications experience.

VMS Highlights

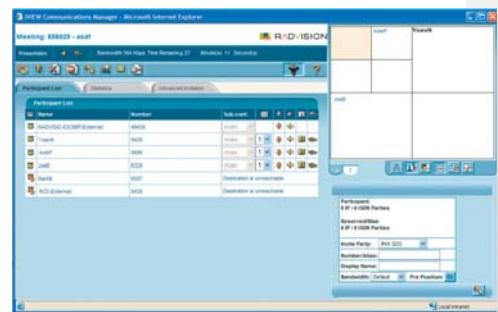
- **Global, centralized view of all video endpoints and network elements** enabling real-time control, monitoring and maintenance of each device from a single interface
- **Easy Web-based scheduling** and ad hoc videoconferencing providing resource reservation and bandwidth monitoring
- **Built-in Gatekeeper functionality** for simple organizational dialing and connectivity to neighboring networks
- **Supports Sony endpoints internal MCU** together with RADVISION MCUs to optimize resource and bandwidth usage
- **Comprehensive multiparty conference control** allows users to easily invite additional attendees, mute and un-mute participants and change the meeting video layout
- **Microsoft® Outlook integration** for scheduling meetings via familiar user interface



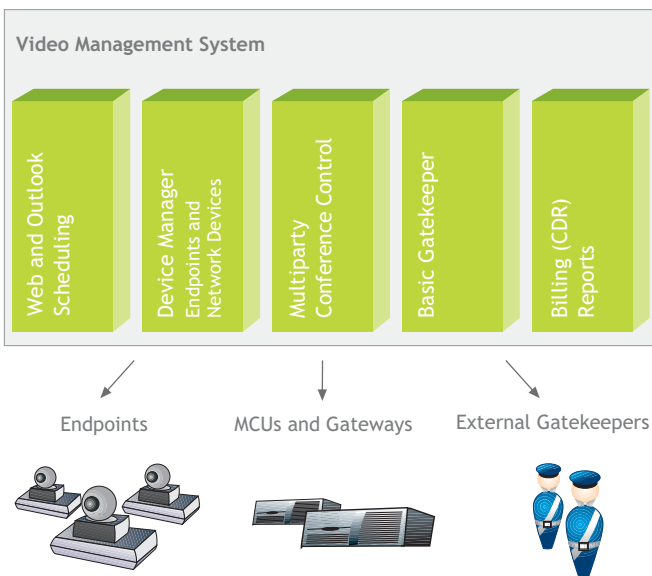
Network view for quick access to endpoints and network elements



Web Scheduling interface - schedule meetings anytime, anywhere



Multiparty Conference Control - easily manage meetings, view participants and detect faults



Designed to manage rich media communications networks, is equipped with the features to manage, control and configure the networks and devices of today—and tomorrow

VMS Packages

The Video Management System manages a network of up to 200 endpoints
Product Specifications

Network Manager	Scheduler	Built-In Gatekeeper
<p>Elements Management</p> <ul style="list-style-type: none">Manages all video devices on the network- Gatekeepers, MCUs, gateways as well as endpointsAuto-detection of video endpoints and network elements allows you to discover your entire video network within a single click <p>Easy-to-use element browser</p> <ul style="list-style-type: none">Network-wide view of calls and conferencesDrag and Drop managementClick an endpoint to open its individual web management interface <p>Endpoint configuration</p> <ul style="list-style-type: none">Central configuration for various endpointsSupport of firmware upgrades, for a single endpoint as well as a group of endpointsEndpoint Configuration download and upload, for single or group of endpointsManages multiple firmware versions and multiple sets of configurations <p>Monitoring and alerts</p> <ul style="list-style-type: none">Complete status and statistics of devicesSNMP notifications containing operational status informationTRAP severity is customizable to fit any type of deploymentDisplay of events and errors received from elements for error managementTrap forwarding to tier 3 manager supported	<p>Scheduling</p> <ul style="list-style-type: none">Web-based intuitive scheduling interface as well as Microsoft Outlook Integration for simplified scheduling experiencePersonal meeting templates for one-click meeting scheduling with your predefined settingsPersonal address book - to easily retrieve your favourite contacts during schedulingAttendees and Endpoints Availability CheckVideo Resources reservation (MCU, GW, GK) and bandwidth reservationAutomatic invite of endpoints (Dial-out)Recurring MeetingsEmail notifications to meeting participants with individual dial-in informationUtilizes Multipoint conferencing capabilities embedded within Sony EndpointsPoint-to-point calls schedulingPrecedence for scheduled calls over ad hoc point-to-point calls, based on resource availabilityManages and schedules catering and accessories <p>Comprehensive Multiparty Meeting Control</p> <ul style="list-style-type: none">View and Control meeting participantsInvite additional participantsChange screen layoutExtend the conference time <p>Administration features</p> <ul style="list-style-type: none">Customizable CDR for billing purposesReports and statisticsUser time-zone Management	<ul style="list-style-type: none">Dial endpoints and join meetings using a simple number instead of an IP addressSupports multiple gateways and MCUs for load balancing and failover for increased call completion rate over IP and ISDN networksRAI/RAC message supportUser configurable dial planSupport of alias names, numbers, URLs or e-mail addressesFull H.245 Routing and control for call monitoring and authorization <p>Multilingual support</p> <p>Administrator (Network Manager):</p> <ul style="list-style-type: none">EnglishJapaneseSimplified ChineseTraditional ChineseKorean <p>User (Scheduler):</p> <ul style="list-style-type: none">EnglishJapaneseSimplified ChineseTraditional ChineseKoreanPortugueseGermanItalianSpanishFrenchRussian
<p>Server Requirements</p> <ul style="list-style-type: none">Pentium 4 2 GHz processor, 512 MB RAMWindows® 2000 Server , Windows® 2003 Server	<p>Web client requirements</p> <ul style="list-style-type: none">Windows 98, NT®, 2000, XP or MEMicrosoft Internet Explorer 6.0 or higher	<p>Outlook add-on requirements</p> <ul style="list-style-type: none">Microsoft Exchange 2000 Server or 2003 Server®Client: Microsoft Outlook 2000 (with Service Pack 3), Microsoft 2002 (Outlook XP), or Outlook 2003

Warranty

One year return-to-factory. Extended warranties and support services available.

[More information on the VMS for Sony is available from RADVISION sales agents or VARs, or go to \[www.radvision.com\]\(http://www.radvision.com\) for further information](#)

Product specifications subject to change without notice. This document is not part of a contract or license as may be expressly agreed. RADVISION is a registered trademark of RADVISION, Ltd. Microsoft, Outlook and Windows and Windows NT are registered trademarks of Microsoft Corporation in the United States and/or other countries. All trademarks recognized. All rights reserved.
© 2005 RADVISION, Ltd. 46008-00015 12-05.

USA/ Americas

Tel +201.689.6300
Fax +201.444.7173
infoUSA@radvision.com

APAC

Tel +852.2.8014.070
Fax +852.2.8014.071
infoAPAC@radvision.com

EMEA

Tel +44.208.757.8817
Fax +44.208.757.8818
infoUK@radvision.com

