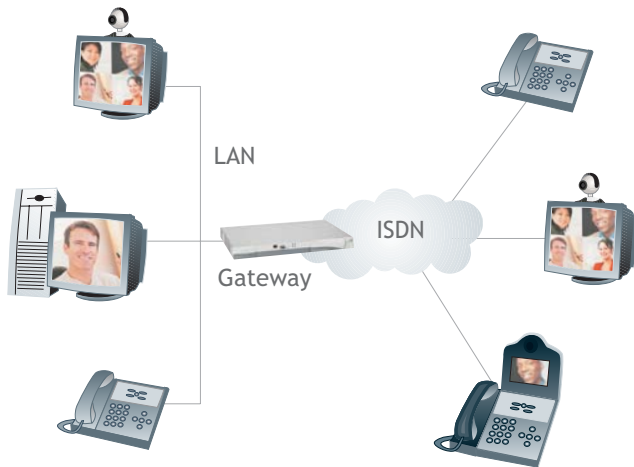


SCOPIA™₁₀₀ Gateways

Plug and play gateways for voice, video and data communications between ISDN and IP networks

SCOPIA₁₀₀ gateways are highly compatible and interoperable with gateways provide seamless connectivity between different networks and standards to deliver feature-rich, reliable, multimedia conferencing and communications.

The gateways are ideal for connecting IP videoconferencing networks with ISDN endpoints and networks to fully utilize existing videoconferencing infrastructure investments.



RADVISION SCOPIA₁₀₀ gateways enable cost-effective connectivity to remote locations, such as branch offices or partner sites.



RADVISION SCOPIA₁₀₀ gateways are part of RADVISION's complete infrastructure offering that includes multiparty conferencing units, data collaboration, gateways, utilities and applications for voice, video and data communications. RADVISION's infrastructure can be used to connect meeting rooms, desktop users and mobile users in large scale distributed network deployments.

Seamless Interoperability

SCOPIA₁₀₀ gateways are highly compatible and interoperable with standard - compliant gatekeepers, terminals, and MCUs. The market-proven SCOPIA₁₀₀ gateways enable connectivity between all videoconferencing systems and offices into a single, unified conferencing network, independent of the protocols or devices used at end sites.

Highly Scalable and Distributed Deployments

SCOPIA₁₀₀ gateways offer flexible, scalable connectivity, distributed or centralized, that grows with your needs to ensure right-sized capacity. Together with multipoint conferencing, Web collaboration applications, scheduling, security modules and powerful network management tools, SCOPIA₁₀₀ gateways put your organization on the right path toward intelligent visual communications.

SCOPIA₁₀₀ Gateway Highlights

- Standard-compliant solutions with guaranteed interoperability
- High quality communications for voice, video and data streams using advanced DSP technologies
- Intelligent management of communication channels to ensure optimal utilization of available resources and services
- Network-wide detection and automatic recovery of communication and resources for superb reliability
- Intuitive and easy-to-use, with centralized management and a global view of full system statistics

SCOPIA₁₀₀ Gateway Product Specifications:

	SCOPIA ₁₀₀ P20	SCOPIA ₁₀₀ P10	SCOPIA ₁₀₀ B40	SCOPIA ₁₀₀ S40
Interfaces	2 ISDN PRI T1/E	1 ISDN PRI T1/E1	4 ISDN BRI Max	V.35/RS-449/EIA-530/EIA530-A DCE & DTE
System Capacity E1 ³	60 voice calls	30 voice calls	8 voice calls	4 video calls @ up to 2Mbps
	30 video calls @ 128Kbps	15 video calls @ 128Kbps	4 video calls @ 128Kbps	
	10 video calls @ 384Kbps	5 video calls @ 384Kbps	2 video calls @ 256Kbps	
	4 video calls @ 768Kbps	2 video calls @ 768Kbps	1 video call @ 384Kbps	
	2 video calls @ full E1	1 video call @ full E1	1 video call @ 12Kbps	
Max System Capacity T1 ³	46 voice calls	23 voice calls		
	23 video calls @ 128Kbps	11 video calls @ 128Kbps		
	7 video calls @ 384Kbps	3 video calls @ 384Kbps		
	3 video calls @ 768Kbps	1 video call @ 768Kbps		
	2 video calls @ full T1	1 video call @ full T1		

Network protocols:

- H.323 over IP
- H.320 over ISDN
- H.320¹ over V.35/RS-449/EIA-530/EIA-530A DCE & DTE
- H.243 conference control

Video Protocols:

- H.261
- H.263
- H.263+
- H.263 ++
- H.264

Video Resolution:

- QCIF
- CIF
- 4CIF
- 16CIF

Audio Protocols:

- G.711
- G.722
- G.722.1
- G.723.1
- G.728

Audio Transcoding:

- G.728<->G.711
- G.711<->G.723

Data Protocols:

- T.120
- T.281 FECC
- TANDBERG DuoVideo
- H.239

Line Echo Cancellation²

Call Bonding²:

- ISDN call bonding of up to 2MB (E1)
- 1.5MB (T1) on PRI connections
- 512Kbps for BRI
- Downspeeding support²

Management:

- SNMP - multiple
- HTTP - embedded Web server

Call Routing:

- Built-in Interactive Voice Response (IVR)
- Direct Inward Dialing (DID)
- TCS4
- Default extension for operator assistance
- Flexible/configurable IP dial plan
- RS366 signaling¹

Encryption:

- H.235 AES/DES³

Network and Reliability Support:

- Dynamic routing of IP calls to neighboring gateways based on resource availability
- Downspeeding support²
- Network optimization for high call completion
- H.320 line related auto registration
- Network Specific Facility (NSF)²
- QoS support with DiffServe, IP TOS and precedence
- Advanced IP packet handling ensuring high quality communications
- Fast connect for voice calls²
- S40 supports the LOS signal and is seamlessly interoperable with encryption devices such as KIV7, used in federal and military markets
- Redirect (PRI) in ISDN-to-IP calls, the gateway will forward to the destination IP terminal caller ID and redirect endpoint details

¹ Specific to gw-S40 Gateway.

² Not supported with the S40 Gateway.

³ Port capacities when using encryption are reduced by half. This does not apply to the S40 and B40 Gateways.

Physical Dimensions

- 19-inch, rack-mountable closed unit of 1U height

Environmental Requirements

- Operating temperature: 0°C to 40°C (32°F to 104°F)
- Storage temperature: -25°C to 70°C (-13°F to 158°F), ambient
- Relative humidity: 5% to 90% non-condensing

Power Module

- Input 100-240VAC Auto detect 50/60Hz

Warranty

- One year return-to-factory
- Extended warranties and support services are available on request

More detailed technical specifications on RADVISION gateways are available from RADVISION sales agents or VARs, or by visiting our website at www.radvision.com

Product specifications subject to change without notice. This document is not part of a contract or licence as may be expressly agreed. RADVISION is a registered trademark of RADVISION, Ltd. vialP and Delivering The Visual Experience are trademarks of RADVISION, Ltd. Microsoft, and Windows are registered trademarks of Microsoft Corporation in the United States and/or other countries. Scopia is a trademark of RADVISION. All trademarks recognized. All rights reserved. © 2006 RADVISION, Ltd. 46008-00001C 02-05