

SCOPIA XT1000 Quick Setup Guide



Package Content:


- SCOPIA XT1000 Codec Unit
- SCOPIA XT1000 Standard Camera
- SCOPIA XT1000 Digital Microphone Array Pod
- SCOPIA XT1000 Remote Control Unit
- Codec Unit Camera Cable
- HDMI Cable
- Digital Microphone Array Pod Cable
- Ethernet Cable for LAN
- Power Supply and Power Cable
- VGA to DVI Adapter and DVI to DVI Cable
- Coaxial Digital Audio Cable
- Diagnostic Cable Adapter
- Base for SCOPIA XT1000 Codec Unit
- Remote Control Batteries



CAUTION: Make sure all units are switched off whenever connecting or disconnecting devices.

A

System Installation and Activation

1. Connect all cables to the SCOPIA XT1000 Codec Unit (see overleaf).
2. Turn on the TV monitors.
3. Make sure the remote control has batteries installed.
4. Verify that the LED on the front panel of the Codec Unit is blinking.
5. Turn on the Codec Unit by pressing the  button on the remote control or the Power button on the back of the Codec Unit.
6. The RADVISION welcome screen appears on the monitors.

B

Product Registration

1. Open the envelope that came with the XT1000.
2. Locate the serial number and product key.
3. On a computer, open a browser and navigate to <http://www.radvision.com/XT1000>.
4. Complete the online registration form and enter the serial number and product key. The web registration form returns a license key.
5. Write down the license key and keep it in a safe place for future use.

C

Country and Language of Interface

Select the **Country** and preferred **Language**. Then select **Next**.



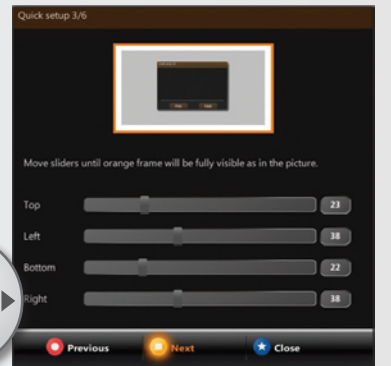
D

Graphics and Image Setup

If all the sides of the orange frame are visible on your monitor, select **Yes**, otherwise select **No**.

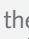


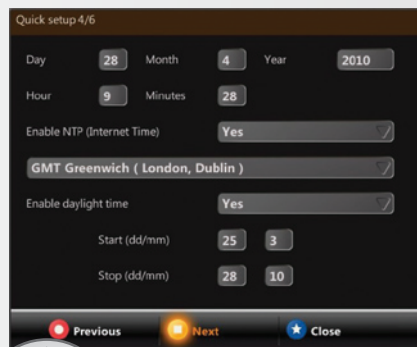
1. Select **OK**. The first slider is highlighted in orange.
2. Use the right and left arrow keys to move the slider until the **Top** orange frame is fully visible on your monitor.
3. Move to a different slider with the up and down arrow keys.
4. Repeat the procedure for the **Left**, **Bottom**, and **Right** side.
5. Select **Next**.



E

Date and Time Setup

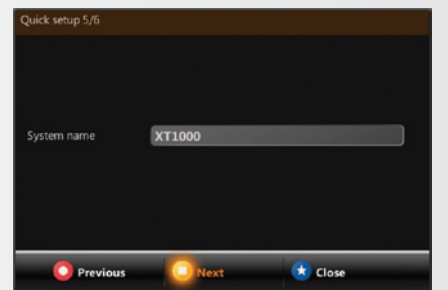
1. Use the up and down arrow keys to navigate to the **Day** field.
2. Press the  button on the remote control to delete the date.
3. Enter today's date.
4. Use the up and down arrow keys to move to the next field.
5. Repeat the procedure for the **Month**, **Year**, **Hour**, and **Minutes**. Then select **Next**.



F

Codec Unit Display Name

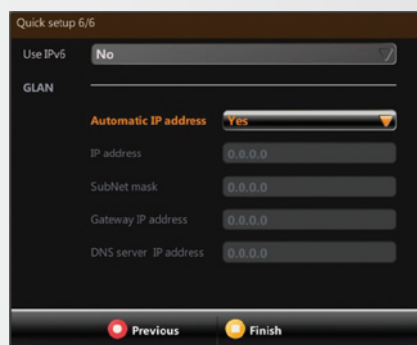
1. The **System Name** field displays the name of this Codec Unit as displayed in a video conference, for example:
 - Hong Kong, or
 - 9th Floor Conf Rm, or
 - NY Office
2. Use the remote control keypad to type the name. Then select **Next**.



G

Network Settings

Enter your network settings. For questions about this information, consult your system administrator. Then select **Finish**.



H

Moving the Camera

1. On the general screen, navigate to **Cameras** using the arrow keys.
2. Select **Move camera**.
3. Use the arrow keys to move the camera to the preferred position.
4. Select **Stop moving camera**.
5. Repeat the procedure if you have a second camera installed.



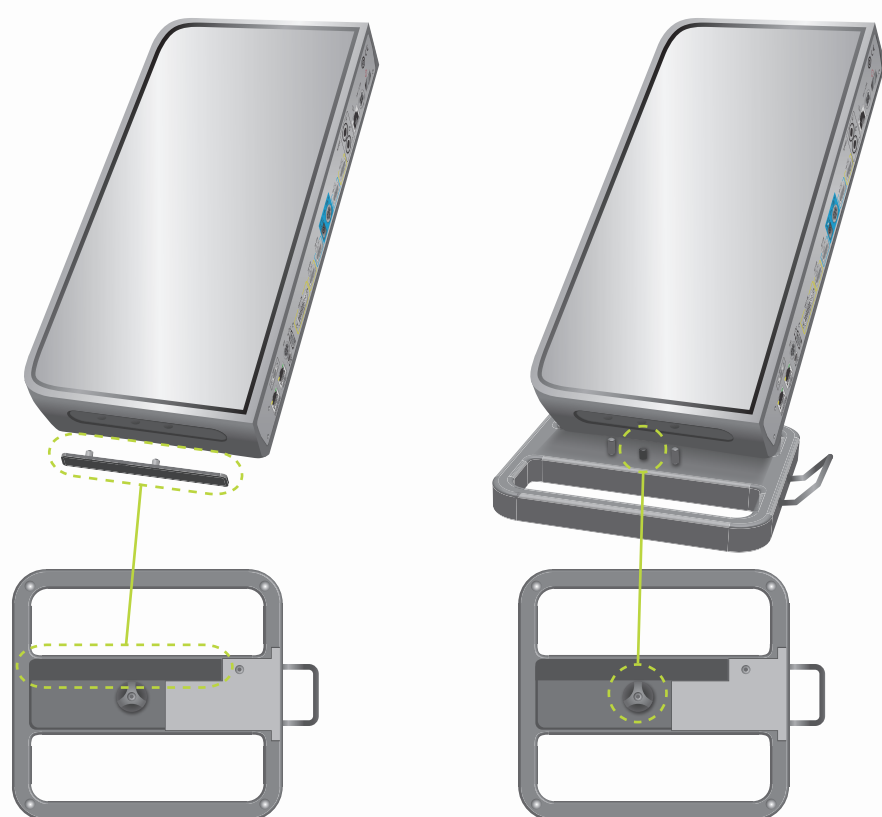
SCOPIA XT1000 Quick Hardware Setup

Package Content:

- 1 Codec Unit
- 2 Standard Camera
- 3 Digital Microphone Array Pod
- 4 Remote Control Unit and Batteries
- 5 Codec Unit Camera Cable
- 6 HDMI Cable
- 7 Digital Microphone Array Pod Cable
- 8 Ethernet Cable for LAN
- 9 Power Supply and Power Cable
- 10 VGA to DVI Adapter
- 11 DVI to DVI Cable
- 12 Coaxial Digital Audio Cable

RADVISION Optional – Not Included Accessories

- 13 Standard Camera
- 14 Digital Microphone Array Pod
- Non-RADVISION**
- 15 HDMI Cable for HD2
- 16 LAN Cable
- 17 Coaxial Digital Audio Cable
- 18 VGA to DVI Cable



To set up the codec vertically on its base, remove the cover on the left side of the Codec Unit and insert it into its base. Fully turn the connecting screw on the base, and make sure it is completely secured.



CAUTION: Make sure all units are switched off whenever connecting or disconnecting devices.

