

DEKOM

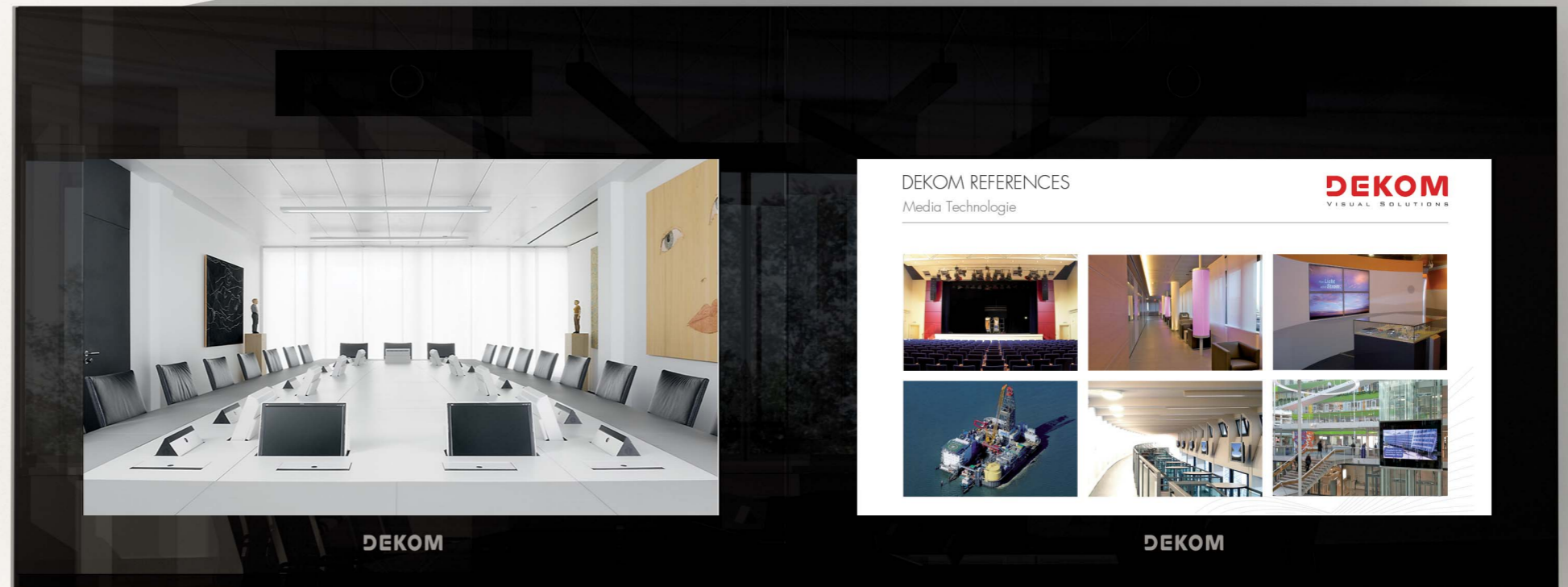
MEDIA PRESENCE ENVIRONMENT – MPE



”

During conferences, the main focus is on contents and people. The barriers relating to when and where we are cooperating today become increasingly blurred. The technology for this has to remain in the background - only then can communication remain efficient.

JÖRG WEISFLOG, CEO DEKOM AG



MEDIA PRESENCE SYSTEM

The MEDIA PRESENCE SYSTEM – MPS is the core element of the MEDIA PRESENCE ENVIRONMENT and brings sophisticated design and state-of-the-art technology perfectly in line. It meets all requirements for a representative presentation. All necessary components have been harmoniously integrated into a wall panel and form a consistent overall image.



MEDIA PRESENCE ENVIRONMENT

The absolute novelty in the market: The MEDIA PRESENCE ENVIRONMENT – an ideal conference room for collaboration that transcends all borders. A room that adjusts to the people and meets modern requirements. With integrated easy-to-use technology that supports communication. Technology, which is easily accessible and nevertheless works invisibly in the background. Because the conference focus is still the human being.

A conference room is always the result of many desires and opinions, long planning and endless discussions. But does it have to be this way? With the MEDIA PRESENCE ENVIRONMENT – MPE we developed a room, which only demands four responses: decide the shape of the table, the number of seats, the colour and the finish of the surface veneer and choose your video conference codec. And your ideal conference room is already prepared for you.

MPE

MEDIA PRESENCE ENVIRONMENT

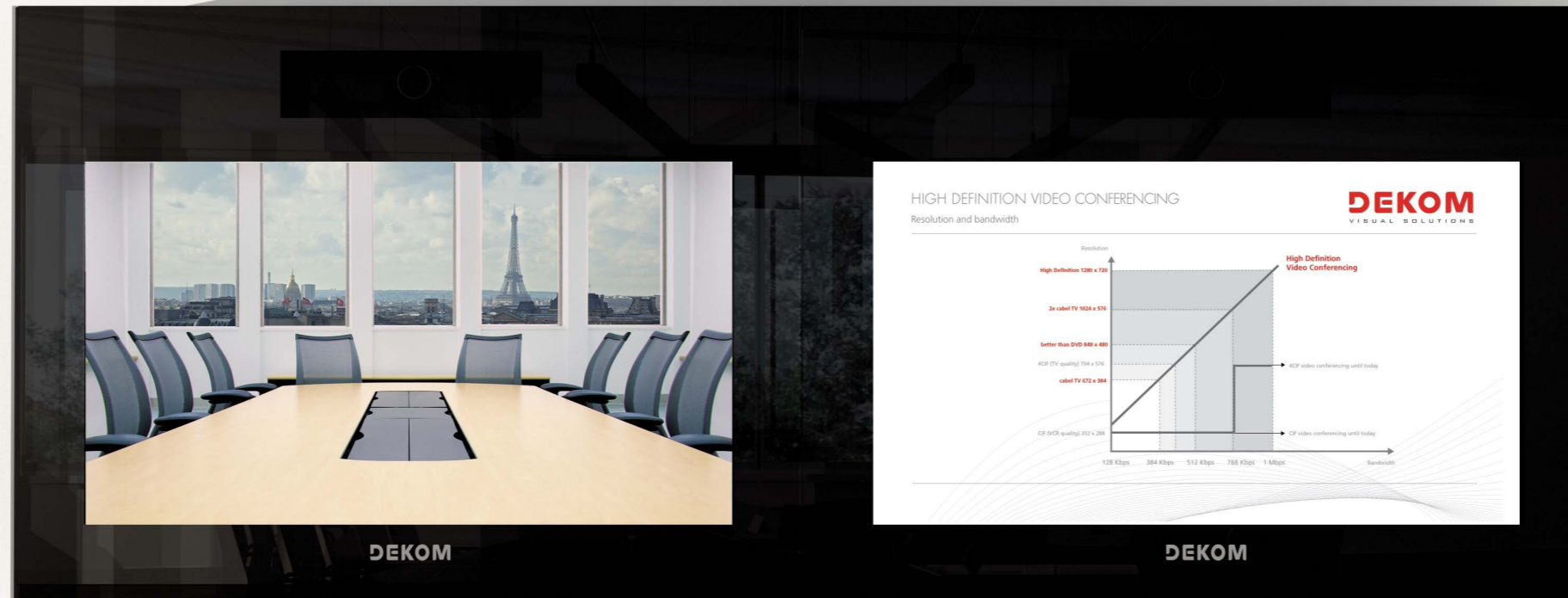


TABLE CONNECTOR PANELS

The elegant table connector panels at every seat provide the necessary connectors throughout the area. VGA, HDMI, network, power supply etc. are thus directly available. Integrated microphones at every connector panel additionally provide for optimum voice quality during video conferences.



MEDIA CONTROL

The central media control via 9" Touchpanel or iPad enables all technique and room components to be operated. A signal crossbar in the background makes the distribution of the respective signals possible. With a few steps you will be able to intuitively operate the video conference system, switch signals to single monitors and control the lighting conditions according to scenarios.



ACOUSTIC

The MEDIA PRESENCE ENVIRONMENT provides for a perfect sound experience: The highly effective acoustic insulation reduces disturbing echo sounds and secures the best possible voice reproduction. On the one hand good voice acoustic arises from the balanced interaction of effective absorption and diffusion of sound by the special acoustic ceiling and the careful selection of all audio creating components.

This provides for a perfect discussion atmosphere for conferences, where several people are working together – whether face-to-face or via video. And even in a quality, which allows long-lasting concentration and relaxed working.

LIGHT

Working concentratedly requires perfect lighting conditions at any time – independent of solar radiation. In the MEDIA PRESENCE ENVIRONMENT the room lighting is completely realised via indirect, glare-free and diffuse light sources.

Doing so, a very homogeneous and constant lighting is created for all seats – independent of daytime and position of the sun. The realised lighting contributes remarkably to fatigue-free working and is ready for the camera at any time.

MPS | 270

MEDIA PRESENCE SYSTEM

Depending on the room size and your requirements, you can determine the size and the number of monitors. In the standard version, the MPS 270 with two high resolution 70" monitors is at your disposal, which depict all transmissions in single and dual technique.

BENDING WAVE LOUDSPEAKER

A novelty in the market is the invisible sound system of the MEDIA PRESENCE SYSTEMS, which works with the glass of the media wall and without visible loudspeakers.

This specially developed glass panel serves as a soundbox, which is caused to resonate by an exciter on the back. As the sound comes directly from the picture, a genuine listening experience is created, which comes very close to natural conversation.

INTEGRATED SUBWOOFER

During low frequency transmission of audio signals, the glass panels, which are designed as bending wave loudspeakers, are supported by a subwoofer to create a authentic acoustic atmosphere during conferences.

FULL HD MONITORS

Irrespective of the source, resolution or application needed at a certain point, the result can also be shown stand-alone or can be transmitted into a video conference.

Use your MEDIA PRESENCE SYSTEM to present, for example, the self-image and the pictures transmitted by video conference at the same time.

INTEGRATED FULL HD VIDEO CONFERENCE SYSTEM

A professional Full HD video conference system guarantees high resolution playback of quality data signals and video pictures. To guarantee an optimum overall impression, the integrated Full HD camera is hidden behind the glass. It records almost unnoticed and makes free and natural communication with your video conference partners possible.



The MPS 170 is a MEDIA PRESENCE SYSTEM equipped with a single 70" display.

DEKOM

DEKOM

NOISELESS AND INVISIBLE

The deliberate choice of fanless components for the MEDIA PRESENCE SYSTEM aims to keep annoying background noise to an absolute minimum.

All technical components in MEDIA PRESENCE SYSTEM are hidden to the naked eye in the 19" extractable compartment under the monitors. It is sufficient to apply light pressure briefly to open the smooth-sliding storage area as required.

TECHNICAL SOPHISTICATION

Every standard MEDIA PRESENCE SYSTEM is equipped with an independent VGA inlet, 5m VGA-/audio cable with 3.5 mm stereo jack connectors, as well as an audio DSP with 4 microphone signals and integrated echo cancellation. The type and number of the signal management and/or additional audio and video inputs vary depending on the video conferencing code used.

The integrated MEDIA PRESENCE SYSTEM public address system has been designed for a 9m x 6m x 3m (L x B x H) area. Additional loudspeakers can be added for larger areas.

The MEDIA PRESENCE SYSTEM has a detailed sensor-controlled air convector system to protect the components. If a room temperature of 25°C is continually exceeded, the system switches off after emitting a prior warning.



DESIGN FOR HIGHEST STANDARDS

No part of furnishing has such a direct influence on the comfort of all participants as chairs.

The combination of carefully thought-out construction, top-quality materials and superior functionality give these conference chairs unmatched style and the opportunity to individually choose form, colour and material.

WELL THOUGHT-OUT RIGHT DOWN TO THE VERY LAST DETAIL

During the development of the MEDIA PRESENCE ENVIRONMENT, the main focus was on representative appearance and maximum flexibility at the same time. Apart from the use of state-of-the-art technology, the MEDIA PRESENCE ENVIRONMENT meets the requirements of the best in comfort and an overall impression of harmony.

The MEDIA PRESENCE ENVIRONMENT can be adjusted to your requirements and your existing conference rooms. After only a few questions referring to the number and the design of the chairs, the desired shape of the table and the veneer, the suitable reply will be delivered for all those, who have big demands to make for their presentation. The Wankel table has rounded edges, which provide a full view for all conference participants. This shape of the table permits telepresence and depicts each participant optimally and in full-size.



The V form, which has been chosen for the MEDIA PRESENCE ENVIRONMENT guarantees an optimum recording perspective for the camera in this multi-purpose conference room.



The Wankel table has rounded edges, which provide a full view for all conference participants. This shape of the table permits telepresence and depicts each participant optimally and in full-size.



EQUIPMENT

The design of the table connector panels is made of the same material as the table top and merges with the surface, so that it is almost invisible when not in use. The illuminated glass control panels of the opened table connector panels always contain all necessary connectors at each place.



WOOD SURFACES

All veneers for each customer are processed from one single log. Thus, table surfaces, fronts and cover plates fit together perfectly.

Already in the veneer plants, the quality is selected according to veneer grain, colour, processing and overall quality. This results in already invisible integration of technology.

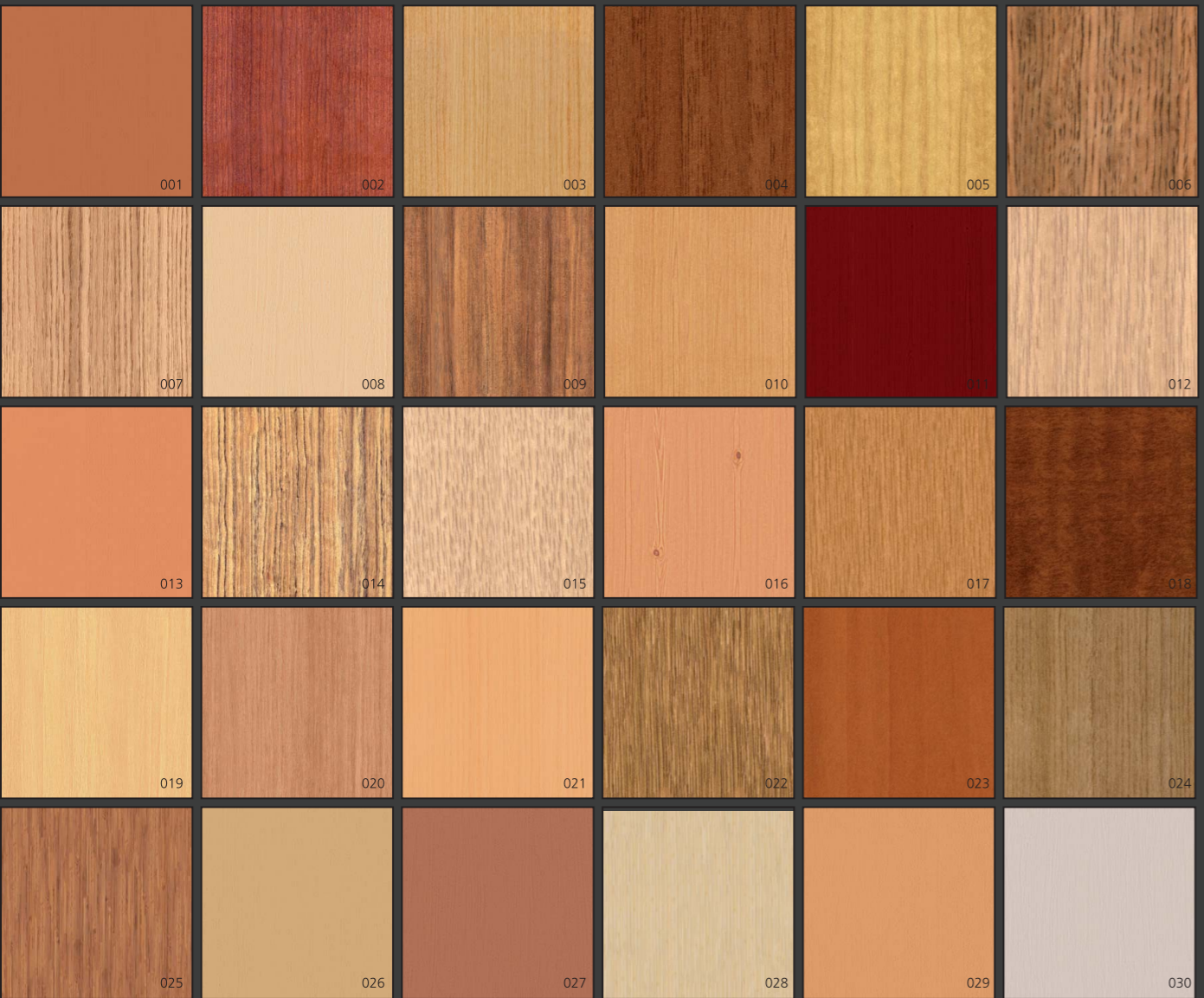
PAINTED SURFACES

Perfect surfaces and perfectly smooth veneers are also features, the MEDIA PRESENCE ENVIRONMENT stands for. The painted surfaces are applied in four layers at veneered surfaces and seven layers when it comes to carcass furniture.

Similar processing is carried out on the undersides of the table surfaces.



By different painted surfaces and the great diversity of real wood veneers, individual requirements can be realised.



MPE

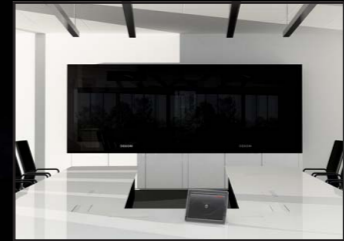
SURFACES



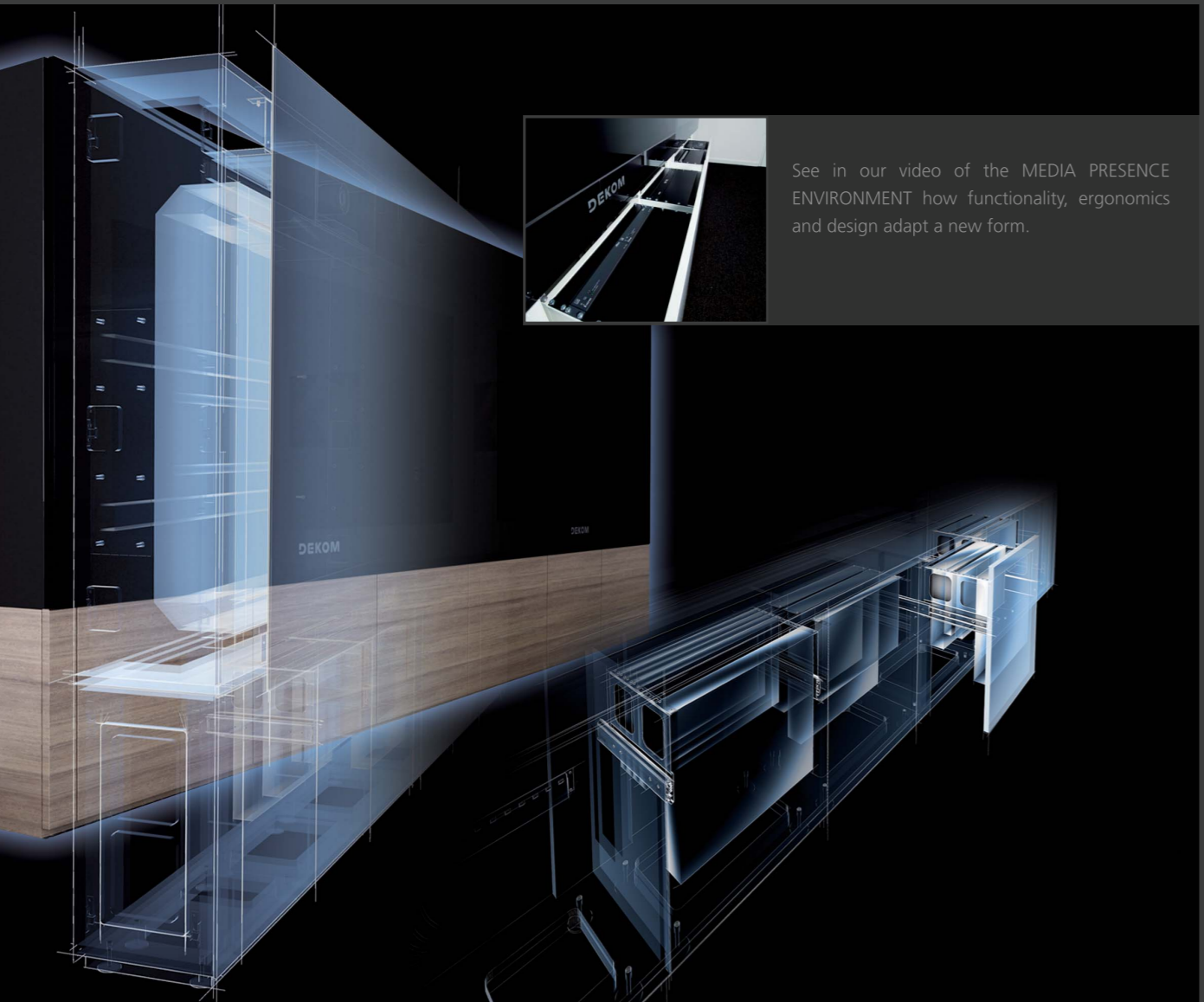
”

During the development of the MEDIA PRESENCE ENVIRONMENT, the main focus was on representative appearance and maximum flexibility at the same time. It meets the requirements of the best in comfort and an overall impression of harmony.

MARC PASQUAY, SALES DEKOM AG



Primarily, the MEDIA PRESENCE SYSTEM impresses with its elegant impression and its absolutely smooth operations. Only at the second glance can one see how much high-tech has been smartly installed to make video conferences perfect.



See in our video of the MEDIA PRESENCE ENVIRONMENT how functionality, ergonomics and design adapt a new form.



VIDEO PRESENTATION

Curious, how the MEDIA PRESENCE ENVIRONMENT looks like in action? Make an appointment at a showroom close by. Just call us.

Don't want to wait that long? Get an impression of the new MEDIA PRESENCE ENVIRONMENT [here](#).

The logo for DEKOM, featuring the word "DEKOM" in a bold, red, sans-serif font. The letters are closely spaced and have a slight shadow effect, giving it a three-dimensional appearance. The background of the entire slide is dark grey with a complex pattern of thin, light grey lines that curve and intersect, creating a sense of depth and movement.

MEDIA PRESENCE ENVIRONMENT – MPE

DEKOM AG | Kellerbleek 3 | 22529 Hamburg | info@dekom.com | www.dekom.com

Fon: +49-40-80 81 81-100 | Fax: +49-40-80 81 81-199 | Video IP: mpe@dekom.uc.de | Video ISDN: +49-40-80 81 85-10